

Recombinant Dog BCHE Protein (1-141 aa), His-tagged

Cat. No. BCHE-354D Lot. No. (See product label)

SPECIFICATION

Product Overview	Recombinant Dog BCHE Protein (1-141 aa) is produced by E. coli expression system. This protein is fused with a 6xHis tag at the N-terminal. Protein Description: Full Length.
Species	Dog
Source	E.coli
ProteinLength	1-141 aa
Description	Esterase with broad substrate specificity. Contributes to the inactivation of the neurotransmitter acetylcholine. Can degrade neurotoxic organophosphate esters.
Form	Tris-based buffer, 50% glycerol
Molecular Mass	19.1 kDa
AA Sequence	NTDQSFPGFPGSEMWNPNNTDLSEDCLYLNWVWIPKPKKNATVMIWIYGGGFQTGTS SLPVYDYGKFLARVERVIVVSVNYRVGALGFLALPGNPEAPGNLGLFDQQLALQWVQ KNIAAFGGNPKSVTLFGESAGAGSVGLHL
Purity	> 90% as determined by SDS-PAGE.
Notes	Repeated freezing and thawing is not recommended. Store working aliquots at 4 centigrade for up to one week.

 Tel: 1-631-559-9269 1-516-512-3133

 Email: info@creative-biomart.com  Fax: 1-631-938-8127

 45-1 Ramsey Road, Shirley, NY 11967, USA

Storage

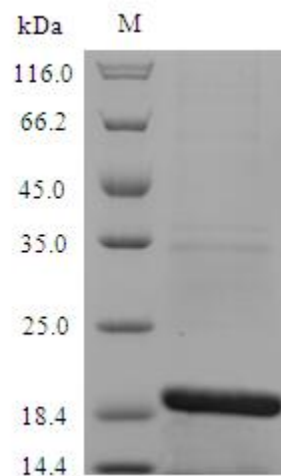
The shelf life is related to many factors, storage state, buffer ingredients, storage temperature and the stability of the protein itself. Generally, the shelf life of liquid form is 6 months at -20 centigrade/-80 centigrade. The shelf life of lyophilized form is 12 months at -20 centigrade/-80 centigrade.

Concentration

A hardcopy of COA with concentration instruction is sent along with the products.

GENE INFORMATION**UniProt ID**

P32750



(Tris-Glycine gel) Discontinuous SDS-PAGE (reduced) with 5% enrichment gel and 15% separation gel.

 Tel: 1-631-559-9269 1-516-512-3133

 Email: info@creative-biomart.com  Fax: 1-631-938-8127

 45-1 Ramsey Road, Shirley, NY 11967, USA