

# Native Human Butyrylcholinesterase

**Cat. No.** BCHE-5291H    **Lot. No.** (See product label)

## SPECIFICATION

|                            |  |
|----------------------------|--|
| <b>Product Overview</b>    | Native human BCHE expressed in Human Serum is a major acetylcholine hydrolyzing enzyme found in the blood circulation.   |
| <b>Species</b>             | Human  |
| <b>Source</b>              | Human Serum  |
| <b>Description</b>         | Butyrylcholinesterase (also known as pseudocholinesterase, plasma cholinesterase, BCHE, or BuChE) is a non-specific cholinesterase enzyme that hydrolyses many different choline esters. In humans, it is found primarily in the liver and is encoded by the BCHE gene. Butyrylcholine is a synthetic compound and does not occur in the body naturally. It is used as a tool to distinguish between acetyl- and BCHE. |
| <b>Form</b>                | Lyophilized from 0.02 M NH <sub>4</sub> HCO <sub>3</sub> Buffer.   |
| <b>Biological Activity</b> | > 100 U/mg protein. One unit will hydrolyze 1.0 μmole of butyrylcholine to choline and butyrate per minute at pH 8.0 at 37°C.  |
| <b>Storage</b>             | Store at -20°C. Stable for 1 year. Avoid repeated freeze-thaw cycles.  |
| <b>Pathways</b>            | Diabetes pathways; Irinotecan Pathway; Synthesis   |

## GENE INFORMATION

**Gene Name**                      [BCHE butyrylcholinesterase \[ Homo sapiens \]](#)

 Tel: 1-631-559-9269    1-516-512-3133

 Email: [info@creative-biomart.com](mailto:info@creative-biomart.com)     Fax: 1-631-938-8127

 45-1 Ramsey Road, Shirley, NY 11967, USA

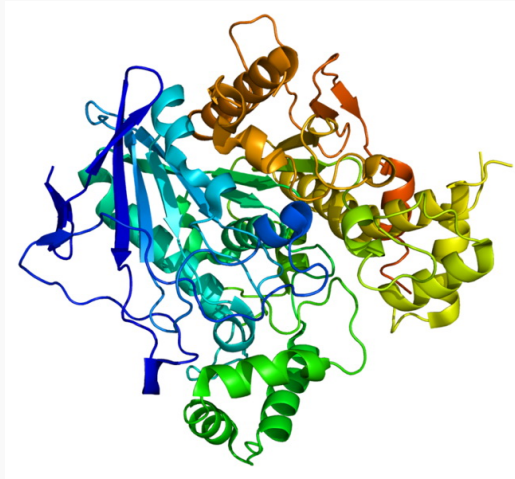
|                            |   |
|----------------------------|---|
| <b>Official Symbol</b>     | BCHE  |
| <b>Synonyms</b>            | BCHE;butyrylcholinesterase; E1; CHE1; cholinesterase; cholinesterase 1;OTTHUMP00000212636; choline esterase II; pseudocholinesterase; butyrylcholineesterase; acylcholine acylhydrolase |
| <b>Gene ID</b>             | 590   |
| <b>mRNA Refseq</b>         | NM_000055   |
| <b>Protein Refseq</b>      | NP_000046   |
| <b>MIM</b>                 | 177400  |
| <b>UniProt ID</b>          | P06276  |
| <b>Chromosome Location</b> | 3q26.1-q26.2  |
| <b>Function</b>            | acetylcholinesteraseactivity; beta-amyloid binding; carboxylesterase activity; catalyticactivity; choline binding; cholinesterase activity; enzyme binding; hydrolaseactivity           |

 Tel: 1-631-559-9269 1-516-512-3133

 Email: [info@creative-biomart.com](mailto:info@creative-biomart.com)  Fax: 1-631-938-8127

 45-1 Ramsey Road, Shirley, NY 11967, USA

PDBrendering based  
on 1p0i.



 Tel: 1-631-559-9269 1-516-512-3133

 Email: [info@creative-biomart.com](mailto:info@creative-biomart.com)  Fax: 1-631-938-8127

 45-1 Ramsey Road, Shirley, NY 11967, USA