

## Recombinant Human BCKDHA protein, His-tagged

Cat. No. BCKDHA-19H    Lot. No. (See product label)

### SPECIFICATION

<b>Product Overview</b>	Recombinant Human BCKDHA protein(264-445 aa), fused with N-terminal His tag, was expressed in E. coli.
<b>Species</b>	Human
<b>Source</b>	E.coli
<b>ProteinLength</b>	264-445 aa
<b>Tag</b>	N-His
<b>Form</b>	The purified protein was Lyophilized from sterile PBS (58mM Na <sub>2</sub> HPO <sub>4</sub> , 17mM NaH <sub>2</sub> PO <sub>4</sub> , 68mM NaCl, pH7.4). 5 % trehalose and 5 % mannitol are added as protectant before lyophilization. The elution buffer contain 300mM imidazole.
<b>Purity</b>	85%, by SDS-PAGE with Coomassie Brilliant Blue staining.
<b>Storage</b>	Short-term storage: Store at 2-8°C for (1-2 weeks). Long-term storage: Aliquot and store at -20°C to -80°C for up to 3 months, reconstitution with sterile water and addition of an equal volume of glycerol. Avoid repeat freeze-thaw cycles.
<b>Reconstitution</b>	Reconstitute at 0.25 µg/µl in 200 µl sterile water for short-term storage. After reconstitution with sterile water, if glycerol has no effect on subsequent experiments, it is recommended to add an equal volume of glycerol for long-term

 Tel: 1-631-559-9269    1-516-512-3133

 Email: [info@creative-biomart.com](mailto:info@creative-biomart.com)     Fax: 1-631-938-8127

 45-1 Ramsey Road, Shirley, NY 11967, USA

storage.

**AA Sequence**

CRNNGYAISTPTSEQYRGDGIAARGPGYGIMSIRVDGNDVFAVYNATKEARRRAVA  
 ENQPFLIEAMTYRIGHHSTSDSSAYRSVDEVNYWDKQDHPISRRLRHYLLSQGWWD  
 EEQEKAWRKQSRRKVMFAFEQAERKPKPNPNULLFSDVYQEMPAQLRKQQESLAR  
 HLQTYGEHYPLDHFDK

## GENE INFORMATION

**Gene Name**

BCKDHA branched chain keto acid dehydrogenase E1, alpha polypeptide [ Homo sapiens ]

**Official Symbol**

[BCKDHA](#)

**Synonyms**

BCKDHA; branched chain keto acid dehydrogenase E1, alpha polypeptide; 2 oxoisovalerate dehydrogenase (lipoamide) , branched chain keto acid dehydrogenase E1, alpha polypeptide (maple syrup urine disease) , OVD1A; 2-oxoisovalerate dehydrogenase subunit alpha, mitochondrial; maple syrup urine disease; MSU; BCKDH E1-alpha; 2-oxoisovalerate dehydrogenase (lipoamide); branched-chain alpha-keto acid dehydrogenase E1 component alpha chain; MSUD1; OVD1A; BCKDE1A; FLJ45695;

**Gene ID**

[593](#)

**mRNA Refseq**

[NM\\_000709](#)

**Protein Refseq**

[NP\\_000700](#)

**MIM**

[608348](#)

**UniProt ID**

[P12694](#)

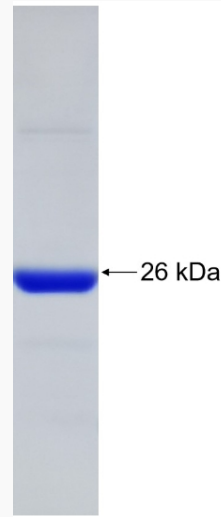
 Tel: 1-631-559-9269 1-516-512-3133

 Email: [info@creative-biomart.com](mailto:info@creative-biomart.com)  Fax: 1-631-938-8127

 45-1 Ramsey Road, Shirley, NY 11967, USA



SDS-PAGE



Tel: 1-631-559-9269 1-516-512-3133

Email: [info@creative-biomart.com](mailto:info@creative-biomart.com) Fax: 1-631-938-8127

45-1 Ramsey Road, Shirley, NY 11967, USA