

Recombinant Human BCKDK Protein, Myc/DDK-tagged, C13 and N15-labeled

Cat. No. BCKDK-652H Lot. No. (See product label)

SPECIFICATION

Product Overview

BCKDK MS Standard C13 and N15-labeled recombinant protein (NP_005872) with a C-terminal MYC/DDK tag, was expressed in HEK293 cells.

Species

Human

Source

HEK293

Description

The branched-chain alpha-ketoacid dehydrogenase complex (BCKD) is an important regulator of the valine, leucine, and isoleucine catabolic pathways. The protein encoded by this gene is found in the mitochondrion, where it phosphorylates and inactivates BCKD. Several transcript variants encoding different isoforms have been found for this gene.

Molecular Mass

46.4 kDa

AA Sequence

MILASVLRSGPGGGLPLRPLLGPALALRARSTSATDTHHVEMARERSKTVTSFYNQS
 AIDAAAEKPSVRLTPTMMLYAGRSQDGSHELLKSARYLQQELPVRIAHRIKGFRCPLFII
 GCNPTILHVHELYIRAFQKLTDFPPIKQDAEAQYCQLVRQLDDHKDVVTLAEGLR
 ESRKHIEDEKLVRYFLDKLTLSRLGIRMLATHHLALHEDKPDFVGIICTRLSPKKIIEKW
 VDFARRLCEHKYGNAPRVRINGHVAARFPFIPMPLDYILPELLKNAMRATMESHLDT
 PYNVPDVVITIANNDVDLIIRISDRGGGIAHKDLDRVMDYHFTTAEASTQDPRISPLFG
 HLDMHSGAQSGPMHGFGLPTSRAYAEYLGGSLQLQSLQGIGTDVYLRRLRHIDGR
 EESFRITRTRPLEQKLISEEDLAANDILDYKDDDDKV

 Tel: 1-631-559-9269 1-516-512-3133

 Email: info@creative-biomart.com  Fax: 1-631-938-8127

 45-1 Ramsey Road, Shirley, NY 11967, USA

Purity	> 80% as determined by SDS-PAGE and Coomassie blue staining
Stability	Stable for 3 months from receipt of products under proper storage and handling conditions.
Storage	Store at -80 centigrade. Avoid repeated freeze-thaw cycles.
Concentration	50 µg/mL as determined by BCA
Storage Buffer	100 mM glycine, 25 mM Tris-HCl, pH 7.3.

GENE INFORMATION

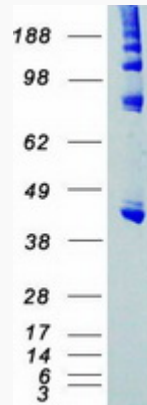
Gene Name	BCKDK branched chain ketoacid dehydrogenase kinase [Homo sapiens (human)]
Official Symbol	BCKDK
Synonyms	BCKDK; branched chain ketoacid dehydrogenase kinase; [3-methyl-2-oxobutanoate dehydrogenase [lipoamide]] kinase, mitochondrial; BCKDHKIN; BCKD-kinase; branched chain alpha-ketoacid dehydrogenase kinase; branched-chain alpha-ketoacid dehydrogenase kinase;
Gene ID	10295
mRNA Refseq	NM_005881
Protein Refseq	NP_005872
MIM	614901
UniProt ID	O14874

 Tel: 1-631-559-9269 1-516-512-3133

 Email: info@creative-biomart.com  Fax: 1-631-938-8127

 45-1 Ramsey Road, Shirley, NY 11967, USA

SDS-PAGE



 Tel: 1-631-559-9269 1-516-512-3133

 Email: info@creative-biomart.com  Fax: 1-631-938-8127

 45-1 Ramsey Road, Shirley, NY 11967, USA