

Recombinant Human BCL10 Protein, His-tagged

Cat. No. BCL10-16H Lot. No. (See product label)

SPECIFICATION

Product Overview	Recombinant human BCL10 protein (1-233aa), fused to His-tag at N-terminus, was expressed in E. coli and purified by using conventional chromatography.
Species	Human
Source	E.coli
ProteinLength	1-233 a.a.
Description	<p>This gene was identified by its translocation in a case of mucosa-associated lymphoid tissue (MALT) lymphoma. The protein encoded by this gene contains a caspase recruitment domain (CARD), and has been shown to induce apoptosis and to activate NF-kappaB. This protein is reported to interact with other CARD domain containing proteins including CARD9, 10, 11 and 14, which are thought to function as upstream regulators in NF-kappaB signaling. This protein is found to form a complex with MALT1, a protein encoded by another gene known to be translocated in MALT lymphoma. MALT1 and this protein are thought to synergize in the activation of NF-kappaB, and the deregulation of either of them may contribute to the same pathogenetic process that leads to the malignancy. Alternative splicing results in multiple transcript variants.</p>
Form	Liquid
Molecular Mass	28.8 kDa (257aa)

 Tel: 1-631-559-9269 1-516-512-3133

 Email: info@creative-biomart.com  Fax: 1-631-938-8127

 45-1 Ramsey Road, Shirley, NY 11967, USA

AA Sequence	MGSSHHHHHSSGLVPRGSHMGSHMEPTAPSLTEEDLTEVKKDALENLRVYLCEKI IAERHFDHLRAKKILSREDTEEISCRTSSRKRAGKLLDYLQENPKGLDTLVESIRREKT QNFLIQKITDEVLKLNRNIKLEHLKGLKCSSCEPFPDGATNNLSRSNSDESINFSEKLRA STVMYHPEGESSTPPFFSTNSSLNLPVLEVGR TENTIFSSSTTLPRPGDGPAPPLPPD LQLEEEGTCANSSEMFLPLRSRTVSRQ
Purity	> 85% by SDS-PAGE
Applications	SDS-PAGE
Storage	Can be stored at 2 to 8 centigrade for 1 week. For long term storage, aliquot and store at -20 to -80 centigrade. Avoid repeated freezing and thawing cycles.
Concentration	0.5 mg/mL (determined by Bradford assay)
Storage Buffer	20mM Tris-HCl buffer (pH 8.0) containing 10% glycerol, 0.05M NaCl, 1mM DTT

GENE INFORMATION

Gene Name	BCL10 BCL10 immune signaling adaptor [Homo sapiens (human)]
Official Symbol	BCL10
Synonyms	BCL10; BCL10 immune signaling adaptor; CLAP; mE10; CIPER; IMD37; c-E10; CARMEN; B-cell lymphoma/leukemia 10; B cell CLL/lymphoma 10; CARD containing molecule enhancing NF-kB; CARD-containing apoptotic signaling protein; CARD-containing molecule enhancing NF-kappa-B; CARD-containing proapoptotic protein; CED-3/ICH-1 prodomain homologous E10-like regulator; cCARMEN; caspase-recruiting domain-containing protein; cellular homolog of vCARMEN; cellular-E10; hCLAP; mammalian CARD-containing adapter molecule E10

 Tel: 1-631-559-9269 1-516-512-3133

 Email: info@creative-biomart.com  Fax: 1-631-938-8127

 45-1 Ramsey Road, Shirley, NY 11967, USA

Gene ID 8915

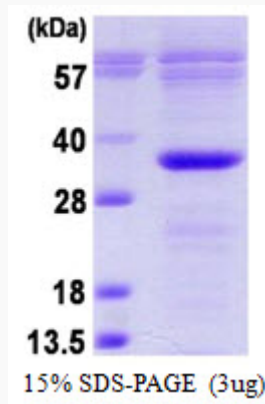
mRNA Refseq NM_003921

Protein Refseq NP_003912

MIM 603517

UniProt ID O95999

SDS-PAGE



3 μ g by SDS-PAGE under reducing condition and visualized by coomassie blue stain.

 Tel: 1-631-559-9269 1-516-512-3133

 Email: info@creative-biomart.com  Fax: 1-631-938-8127

 45-1 Ramsey Road, Shirley, NY 11967, USA