

Recombinant Human BCL2 Protein

Cat. No. BCL2-22H Lot. No. (See product label)

SPECIFICATION

Product Overview	Recombinant Human BCL2 Protein without tag was expressed in E. coli.
Species	Human
Source	E.coli
Description	This gene encodes an integral outer mitochondrial membrane protein that blocks the apoptotic death of some cells such as lymphocytes. Constitutive expression of BCL2, such as in the case of translocation of BCL2 to Ig heavy chain locus, is thought to be the cause of follicular lymphoma. Alternative splicing results in multiple transcript variants.
Molecular Mass	24.7 kDa
Purity	> 95% by SDS-PAGE
Usage	For research purposes only (Inhibitor Screening, binding assay)
Storage	Stable for 12 months at -80 centigrade, Avoid freeze/thaw cycles
Storage Buffer	25 mM Tris-HCl, 150 mM NaCl, 2 mM DTT, 10% Glycerol

GENE INFORMATION

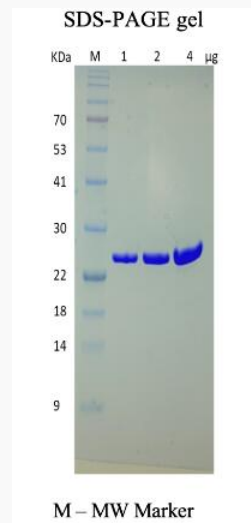
Gene Name	BCL2 B-cell CLL/lymphoma 2 [Homo sapiens (human)]
------------------	---

 Tel: 1-631-559-9269 1-516-512-3133

 Email: info@creative-biomart.com  Fax: 1-631-938-8127

 45-1 Ramsey Road, Shirley, NY 11967, USA

Official Symbol	BCL2
Synonyms	BCL2; B-cell CLL/lymphoma 2; apoptosis regulator Bcl-2; Bcl 2; PPP1R50; protein phosphatase 1; regulatory subunit 50; protein phosphatase 1, regulatory subunit 50; Bcl-2;
Gene ID	596
mRNA Refseq	NM_000633
Protein Refseq	NP_000624
MIM	151430
UniProt ID	P10415

SDS-PAGE


 Tel: 1-631-559-9269 1-516-512-3133

 Email: info@creative-biomart.com  Fax: 1-631-938-8127

 45-1 Ramsey Road, Shirley, NY 11967, USA