

Recombinant Human BCL2 protein, GST-tagged

Cat. No. BCL2-26734TH Lot. No. (See product label)

SPECIFICATION

| | |
|-------------------------|---|
| Product Overview | Recombinant Human BCL2(1 a.a. - 451 a.a.) fused with GST tag at N-terminal was expressed in E. coli. |
| Species | Human |
| Source | E.coli |
| ProteinLength | 1-451 a.a. |
| Description | BCL2 gene encodes an integral inner mitochondrial membrane protein that acts as an antiapoptotic protein (1). The protein BAD can antagonize both the cell cycle and antiapoptotic functions of BCL2 through binding to the BH3 domain. Constitutive expression of BCL2, such as in the case of translocation of BCL2 to Ig heavy chain locus, is thought to be the cause of follicular lymphoma (2). BCL2 is phosphorylated on specific serine/threonine residues within the unstructured loop in response to diverse stimuli and such phosphorylation has been associated with the loss of the biological function of BCL2. |
| Form | 50mM Tris-HCl, pH 7.5, 150mM NaCl, 10mM glutathione, 0.1mM EDTA, 0.25mM DTT, 0.1mM PMSF, 25% glycerol. |
| Molecular Mass | ~51kDa |
| Purity | > 80% |

 Tel: 1-631-559-9269 1-516-512-3133

 Email: info@creative-biomart.com  Fax: 1-631-938-8127

 45-1 Ramsey Road, Shirley, NY 11967, USA

| | |
|----------------------------|--|
| Stability | 1 year at -70 centigrade from the date of shipment |
| Storage | Store product at -70 centigrade. For optimal storage, aliquot target into smaller quantities after centrifugation and store at recommended temperature. For most favorable performance, avoid repeated handling and multiple freeze/thaw cycles. |
| Concentration | 0.2µg/µl |
| GENE INFORMATION | |
| Gene Name | BCL2 B-cell CLL/lymphoma 2 [Homo sapiens] |
| Official Symbol | BCL2 |
| Synonyms | BCL2; B-cell CLL/lymphoma 2; apoptosis regulator Bcl-2; Bcl 2; PPP1R50; protein phosphatase 1; regulatory subunit 50; protein phosphatase 1, regulatory subunit 50; Bcl-2; |
| Gene ID | 596 |
| mRNA Refseq | NM_000633 |
| Protein Refseq | NP_000624 |
| UniProt ID | P10415 |
| Chromosome Location | 18q21.3 |
| Pathway | ATF-2 transcription factor network, organism-specific biosystem; Activation of BAD and translocation to mitochondria, organism-specific biosystem; Activation of BH3- |

 Tel: 1-631-559-9269 1-516-512-3133

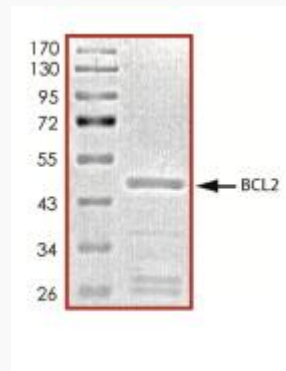
 Email: info@creative-biomart.com  Fax: 1-631-938-8127

 45-1 Ramsey Road, Shirley, NY 11967, USA

only proteins, organism-specific biosystem; Amyotrophic lateral sclerosis (ALS), organism-specific biosystem; Amyotrophic lateral sclerosis (ALS), conserved biosystem; Apoptosis, organism-specific biosystem; Apoptosis, organism-specific biosystem;

Function

BH3 domain binding; channel activity; identical protein binding; protease binding; protein binding; protein heterodimerization activity; protein homodimerization activity; protein phosphatase 2A binding; sequence-specific DNA binding; transcription factor binding; ubiquitin protein ligase binding;



Tel: 1-631-559-9269 1-516-512-3133

Email: info@creative-biomart.com Fax: 1-631-938-8127

45-1 Ramsey Road, Shirley, NY 11967, USA