

Active Recombinant Human BCL2 protein, His-tagged

Cat. No. BCL2-267H Lot. No. (See product label)

SPECIFICATION

Product Overview	Active Recombinant Human BCL2 protein(P10415-) (Met 1-Asp 211) was expressed in E.coli, with a polyhistide tag at the C-terminus.
Species	Human
Source	E.coli
ProteinLength	1-211 aa
Form	Lyophilized from sterile 50mM Tris, 20% glycerol, 100mM Arg, pH 8.5.
Bio-activity	Measured by its binding ability in a functional ELISA. Immobilized human BCL2-His at 10 µg/ml (100 µl/well) can bind biotinylated mouse BCL2L1-His, The EC50 of biotinylated mouse BCL2L1-His is 0.07-0.15 µg/ml.
Molecular Mass	The recombinant human BCL2 consisting of 221 amino acids and has a calculated molecular mass of 24.7 kDa. It migrates as an approximately 32 KDa band in SDS-PAGE under reducing conditions.
Purity	> 90 % as determined by SDS-PAGE
Storage	Store it under sterile conditions at -20°C to -80°C upon receiving. Recommend to aliquot the protein into smaller quantities for optimal storage. Avoid repeated freeze-thaw cycles.

 Tel: 1-631-559-9269 1-516-512-3133

 Email: info@creative-biomart.com  Fax: 1-631-938-8127

 45-1 Ramsey Road, Shirley, NY 11967, USA

Reconstitution It is recommended that sterile water be added to the vial to prepare a stock solution of 0.2 ug/ul. Centrifuge the vial at 4°C before opening to recover the entire contents.

GENE INFORMATION

Gene Name BCL2 B-cell CLL/lymphoma 2 [Homo sapiens]

Official Symbol BCL2

Synonyms BCL2; B-cell CLL/lymphoma 2; apoptosis regulator Bcl-2; Bcl 2; PPP1R50; protein phosphatase 1; regulatory subunit 50; protein phosphatase 1, regulatory subunit 50; Bcl-2;

Gene ID 596

mRNA Refseq NM_000633

Protein Refseq NP_000624

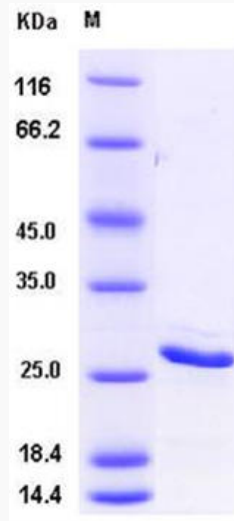
UniProt ID P10415

 Tel: 1-631-559-9269 1-516-512-3133

 Email: info@creative-biomart.com  Fax: 1-631-938-8127

 45-1 Ramsey Road, Shirley, NY 11967, USA

SDS-PAGE



 Tel: 1-631-559-9269 1-516-512-3133

 Email: info@creative-biomart.com  Fax: 1-631-938-8127

 45-1 Ramsey Road, Shirley, NY 11967, USA