

Recombinant Human BCL2 Protein, Myc/DDK-tagged, C13 and N15-labeled

Cat. No. BCL2-4343H **Lot. No.** (See product label)

SPECIFICATION

Product Overview	BCL2 MS Standard C13 and N15-labeled recombinant protein (NP_000624) with a C-terminal MYC/DDK tag, was expressed in HEK293 cells.
Species	Human
Source	HEK293
Description	This gene encodes an integral outer mitochondrial membrane protein that blocks the apoptotic death of some cells such as lymphocytes. Constitutive expression of BCL2, such as in the case of translocation of BCL2 to Ig heavy chain locus, is thought to be the cause of follicular lymphoma. Alternative splicing results in multiple transcript variants.
Molecular Mass	26.1 kDa
AA Sequence	MAHAGRTGYDNREIVMKYIHYKLSQRGYEWDAAGDVGAAPPGAAPAPGIFSSQPGH TPHPAASRDVPARTSPLQTPAAPGAAAGPALSPVPPVHLLTRQAGDDFSRRYRRD FAEMSSQLHLTPFTARGRFATVVEELFRDGVNWGRIVAFFEFGGVMCVESVNREM SPLVDNIALWMTEYLNRLHHTWIQDNGGWDAFVELYGPSMRPLDFSWLSLKTLLS LALVGACITLGAYLGHKTRTRPLEQKLISEEDLAANDILDYKDDDDKV
Purity	> 80% as determined by SDS-PAGE and Coomassie blue staining
Stability	Stable for 3 months from receipt of products under proper storage and handling

 Tel: 1-631-559-9269 1-516-512-3133

 Email: info@creative-biomart.com  Fax: 1-631-938-8127

 45-1 Ramsey Road, Shirley, NY 11967, USA

conditions.

Storage Store at -80 centigrade. Avoid repeated freeze-thaw cycles.

Concentration 50 µg/mL as determined by BCA

Storage Buffer 100 mM glycine, 25 mM Tris-HCl, pH 7.3.

GENE INFORMATION

Gene Name BCL2 B-cell CLL/lymphoma 2 [Homo sapiens (human)]

Official Symbol BCL2

Synonyms BCL2; B-cell CLL/lymphoma 2; apoptosis regulator Bcl-2; Bcl 2; PPP1R50; protein phosphatase 1; regulatory subunit 50; protein phosphatase 1, regulatory subunit 50; Bcl-2;

Gene ID 596

mRNA Refseq NM_000633

Protein Refseq NP_000624

MIM 151430

UniProt ID P10415

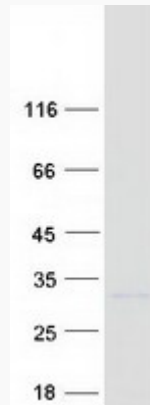
 Tel: 1-631-559-9269 1-516-512-3133

 Email: info@creative-biomart.com  Fax: 1-631-938-8127

 45-1 Ramsey Road, Shirley, NY 11967, USA



SDS-PAGE



Tel: 1-631-559-9269 1-516-512-3133

Email: info@creative-biomart.com Fax: 1-631-938-8127

45-1 Ramsey Road, Shirley, NY 11967, USA