

Recombinant Dog BCL2 protein, His-tagged

Cat. No. BCL2-5732D Lot. No. (See product label)

SPECIFICATION

Product Overview	Recombinant Dog BCL2 protein(Q6R755)(1-236aa), fused with N-terminal His tag, was expressed in vitro E.coli expression system.
Species	Dog
Source	E.coli
ProteinLength	1-236aa
Tag	N-His
Form	If the delivery form is liquid, the default storage buffer is Tris/PBS-based buffer, 5%-50% glycerol. If the delivery form is lyophilized powder, the buffer before lyophilization is Tris/PBS-based buffer, 6% Trehalose, pH 8.0.
Molecular Mass	28.0 kDa
Purity	Greater than 85% as determined by SDS-PAGE.
Storage	Store at -20°C/-80°C upon receipt, aliquoting is necessary for mutiple use. Avoid repeated freeze-thaw cycles.
Reconstitution	We recommend that this vial be briefly centrifuged prior to opening to bring the contents to the bottom. Please reconstitute protein in deionized sterile water to a concentration of 0.1-1.0 mg/mL. We recommend to add 5-50% of glycerol (final

 Tel: 1-631-559-9269 1-516-512-3133

 Email: info@creative-biomart.com  Fax: 1-631-938-8127

 45-1 Ramsey Road, Shirley, NY 11967, USA

concentration) and aliquot for long-term storage at -20°C/-80°C.

AA Sequence

MAQAGRTGYDNREIVMKYIHYKLSQRGYEWDVGDVDAAPLGAAPTGGIFSFQPESN
 PTPAVHRDMAARTSPLRPVATTGPTLSPVPPVVHLTLRRAGDDFSRRYRRDFAEM
 SSQLHLTPFTARGRFATVVEELFRDGVNWGRIVAFFEFGGVMCVESVNREMSPLVD
 NIALWMTEYLNRLHHTWIQDNGGWDAFVELYGPTMQPLFDFSWLSLKALLSLALVG
 ACITLGAYLGHK

GENE INFORMATION

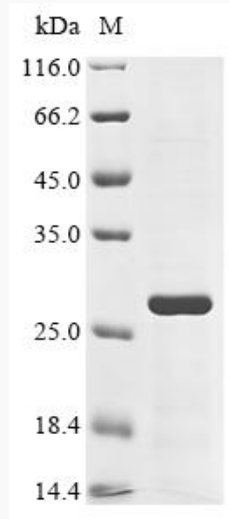
Gene Name	BCL2 B-cell CLL/lymphoma 2 [<i>Canis lupus familiaris</i>]
Official Symbol	BCL2
Synonyms	BCL2; B-cell CLL/lymphoma 2; apoptosis regulator Bcl-2; BCL-2;
Gene ID	403416
mRNA Refseq	NM_001002949
Protein Refseq	NP_001002949

 Tel: 1-631-559-9269 1-516-512-3133

 Email: info@creative-biomart.com  Fax: 1-631-938-8127

 45-1 Ramsey Road, Shirley, NY 11967, USA

SDS-PAGE



 Tel: 1-631-559-9269 1-516-512-3133

 Email: info@creative-biomart.com  Fax: 1-631-938-8127

 45-1 Ramsey Road, Shirley, NY 11967, USA