

## Recombinant Human BCL2 protein

Cat. No. BCL2-76H Lot. No. (See product label)

### SPECIFICATION

<b>Product Overview</b>	Recombinant Human BCL2 protein(P10415)(2-211 aa) was expressed in E.coli.
<b>Species</b>	Human
<b>Source</b>	E.coli
<b>ProteinLength</b>	2-211 aa
<b>Form</b>	0.2 µ filtered concentrated solution in 25 mM Tris-HCl, pH 8.0, 100mM NaCl, 1 mM DTT, 30 % Glycerol, with Tween-80.
<b>Molecular Mass</b>	Approximately 23.2 kDa, a single non-glycosylated polypeptide chain containing 210 amino acids.
<b>AASequence</b>	AHAGRTGYDN REIVMKYIHY KLSQRGYEWG AGDVGAAPPG AAPAPGIFSS QPGHTPHPAA SRDPVARTSP LQTPAAPGAA AGPALSPVPP VVHLTLRQAG DDFSRRYRRD FAEMSSQLHL TPFTARGRFA TVVEELFRDG VNWGRIVAFF EFGGVMCVES VNREMSPLVD NIALWMTEYL NRHLHTWIQD NGGWDAFVEL YGPSMRPLFD
<b>Endotoxin</b>	Less than 0.1 EU/g of rHuBcl-2 as determined by LAL method.
<b>Purity</b>	>95% by SDS-PAGE and HPLC analyses.
<b>Storage</b>	Use a manual defrost freezer and avoid repeated freeze-thaw cycles. - 12 months

 Tel: 1-631-559-9269 1-516-512-3133

 Email: [info@creative-biomart.com](mailto:info@creative-biomart.com)  Fax: 1-631-938-8127

 45-1 Ramsey Road, Shirley, NY 11967, USA

from date of receipt, -20 to -70 °C as supplied. - 1 month, 2 to 8 °C under sterile conditions after reconstitution. - 3 months, -20 to -70 °C under sterile conditions after reconstitution.

**Reconstitution**

We recommend that this vial be briefly centrifuged prior to opening to bring the contents to the bottom. Reconstitute in sterile distilled water or aqueous buffer containing 0.1 % BSA to a concentration of 0.1-1.0 mg/mL. Stock solutions should be apportioned into working aliquots and stored at ≤ -20 °C. Further dilutions should be made in appropriate buffered solutions.

## GENE INFORMATION

**Gene Name** [BCL2 B-cell CLL/lymphoma 2 \[ Homo sapiens \]](#)

**Official Symbol** [BCL2](#)

**Synonyms** BCL2; B-cell CLL/lymphoma 2; apoptosis regulator Bcl-2; Bcl 2; PPP1R50; protein phosphatase 1; regulatory subunit 50; protein phosphatase 1, regulatory subunit 50; Bcl-2;

**Gene ID** [596](#)

**mRNA Refseq** [NM\\_000633](#)

**Protein Refseq** [NP\\_000624](#)

**UniProt ID** [P10415](#)

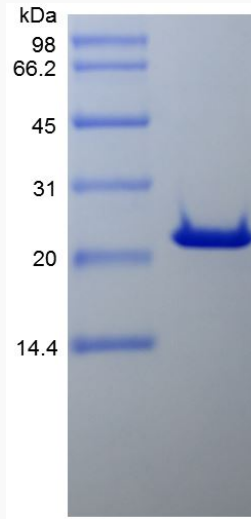
 Tel: 1-631-559-9269 1-516-512-3133

 Email: [info@creative-biomart.com](mailto:info@creative-biomart.com)  Fax: 1-631-938-8127

 45-1 Ramsey Road, Shirley, NY 11967, USA



SDS-PAGE



Tel: 1-631-559-9269 1-516-512-3133

Email: [info@creative-biomart.com](mailto:info@creative-biomart.com) Fax: 1-631-938-8127

45-1 Ramsey Road, Shirley, NY 11967, USA