

Recombinant Full Length Human BCL2 Protein, C-Flag-tagged

Cat. No. BCL2-775HFL Lot. No. (See product label)

SPECIFICATION

Product Overview	Recombinant Full Length Human BCL2 Protein, fused to Flag-tag at C-terminus, was expressed in Mammalian cells.
Species	Human
Source	Mammalian Cells
Description	This gene encodes an integral outer mitochondrial membrane protein that blocks the apoptotic death of some cells such as lymphocytes. Constitutive expression of BCL2, such as in the case of translocation of BCL2 to Ig heavy chain locus, is thought to be the cause of follicular lymphoma. Alternative splicing results in multiple transcript variants.
Form	25 mM Tris HCl, pH 7.3, 100 mM glycine, 10% glycerol.
Molecular Mass	26.1 kDa
AA Sequence	MAHAGRTGYDNREIVMKYIHYKLSQRGYEWDAAGDVGAAPPGAAPAPGIFSSQPGH TPHPAASRDPVARTS PLQTPAAPGAAAGPALSPVPPVHLLTRQAGDDFSRRYRR DFAEMSSQLHLTPFTARGRFATVVEELFRD GVNWGRIVAFFEFGGVMCVESVNRE MSPLVDNIALWMTEYLNRLHTWIQDNGGWDAFVELYGPSMRPLF DFSWLSLKTLLSLALVGACITLGAYLGHKTRTRPLEQKLISEEDLAANDILDYKDDDDK V
Purity	> 80% as determined by SDS-PAGE and Coomassie blue staining.

 Tel: 1-631-559-9269 1-516-512-3133

 Email: info@creative-biomart.com  Fax: 1-631-938-8127

 45-1 Ramsey Road, Shirley, NY 11967, USA

Stability	Stable for 12 months from the date of receipt of the product under proper storage and handling conditions. Avoid repeated freeze-thaw cycles.
Storage	Store at -80 centigrade.
Concentration	>50 ug/mL as determined by microplate BCA method.
Preparation	Recombinant protein was captured through anti-DDK affinity column followed by conventional chromatography steps.
Protein Families	Druggable Genome, ES Cell Differentiation/IPS, Stem cell - Pluripotency, Transmembrane
Protein Pathways	Amyotrophic lateral sclerosis (ALS), Apoptosis, Colorectal cancer, Focal adhesion, Neurotrophin signaling pathway, Pathways in cancer, Prostate cancer, Small cell lung cancer
Full Length	Full L.

GENE INFORMATION

Gene Name	BCL2 BCL2 apoptosis regulator [Homo sapiens (human)]
Official Symbol	BCL2
Synonyms	Bcl-2; PPP1R50
Gene ID	596
mRNA Refseq	NM_000633.3

 Tel: 1-631-559-9269 1-516-512-3133

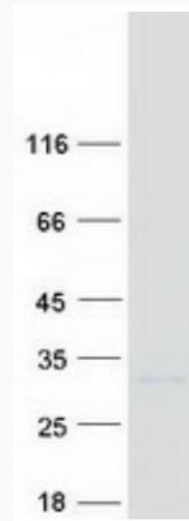
 Email: info@creative-biomart.com  Fax: 1-631-938-8127

 45-1 Ramsey Road, Shirley, NY 11967, USA

Protein Refseq NP_000624.2

MIM 151430

UniProt ID P10415



Coomassie blue staining of purified BCL2 protein.

 Tel: 1-631-559-9269 1-516-512-3133

 Email: info@creative-biomart.com  Fax: 1-631-938-8127

 45-1 Ramsey Road, Shirley, NY 11967, USA