

Recombinant Human BCL2 protein, His-tagged

Cat. No. BCL2-7854H Lot. No. (See product label)

SPECIFICATION

Product Overview	Recombinant Human BCL2 protein(1-239 aa), fused with N-terminal His tag, was expressed in E. coli.
ProteinLength	1-239 aa
Tag	N-His
Form	The purified protein was Lyophilized from sterile PBS (58mM Na ₂ HPO ₄ , 17mM NaH ₂ PO ₄ , 68mM NaCl, pH7.4). 5 % trehalose and 5 % mannitol are added as protectant before lyophilization.
Purity	85%, by SDS-PAGE with Coomassie Brilliant Blue staining.
Storage	Short-term storage: Store at 2-8°C for (1-2 weeks). Long-term storage: Aliquot and store at -20°C to -80°C for up to 3 months, reconstitution with sterile water and addition of an equal volume of glycerol. Avoid repeat freeze-thaw cycles.
Reconstitution	Reconstitute at 0.25 µg/µl in 200 µl sterile water for short-term storage. After reconstitution with sterile water, if glycerol has no effect on subsequent experiments, it is recommended to add an equal volume of glycerol for long-term storage.
AA Sequence	MAHAGRTGYDNREIVMKYIHYKLSQRGYEWDAGDVGAAPPGAAPAPGIFSSQPGH TPHPAASRDPVARTSPLQTPAAPGAAAGPALSPVPPVVHLTLRQAGDDFSRRYRRD FAEMSSQLHLTPFTARGRFATVVEELFRDGVNWGRIVAFFEFGGVMCVESVNREM SPLVDNIALWMTEYLNRLHHTWIQDNGGWDAFVELYGPSMRPLDFSWLSLKTLLS

 Tel: 1-631-559-9269 1-516-512-3133

 Email: info@creative-biomart.com  Fax: 1-631-938-8127

 45-1 Ramsey Road, Shirley, NY 11967, USA

LALVGACITLGAYLGHK

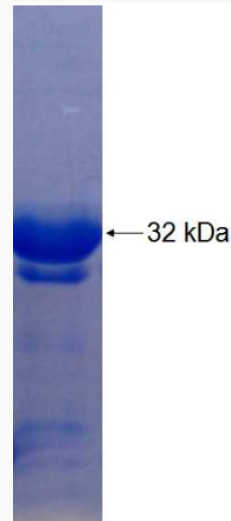
GENE INFORMATION

Gene Name	BCL2 B-cell CLL/lymphoma 2 [Homo sapiens]
Official Symbol	BCL2
Synonyms	BCL2; B-cell CLL/lymphoma 2; apoptosis regulator Bcl-2; Bcl 2; PPP1R50; protein phosphatase 1; regulatory subunit 50; protein phosphatase 1, regulatory subunit 50; Bcl-2;
Gene ID	596
mRNA Refseq	NM_000633
Protein Refseq	NP_000624
UniProt ID	P10415

 Tel: 1-631-559-9269 1-516-512-3133 Email: info@creative-biomart.com  Fax: 1-631-938-8127 45-1 Ramsey Road, Shirley, NY 11967, USA



SDS-PAGE



Tel: 1-631-559-9269 1-516-512-3133

Email: info@creative-biomart.com Fax: 1-631-938-8127

45-1 Ramsey Road, Shirley, NY 11967, USA