

## Recombinant Human BCL2A1 Protein (Met1-Ser152), C-His-tagged

Cat. No. BCL2A1-0478H Lot. No. (See product label)

### SPECIFICATION

<b>Product Overview</b>	Recombinant human BCL2A1 (Met1-Ser152) was fused with the C-terminal His tag and was expressed in E. coli.
<b>Species</b>	Human
<b>Source</b>	E.coli
<b>ProteinLength</b>	Met1-Ser152
<b>Form</b>	Lyophilized powder/frozen liquid
<b>Molecular Mass</b>	16.72 kDa
<b>Purity</b>	>90% as determined by SDS-PAGE
<b>Notes</b>	For research use only.
<b>Storage</b>	Use a manual defrost freezer and avoid repeated freeze thaw cycles. Store at 2 to 8 centigrade for one week. Store at -20 to -80 centigrade for twelve months from the date of receipt.
<b>Storage Buffer</b>	Supplied as solution form in PBS or lyophilized from PBS.
<b>Reconstitution</b>	Reconstitute in sterile water for a stock solution.

 Tel: 1-631-559-9269 1-516-512-3133

 Email: [info@creative-biomart.com](mailto:info@creative-biomart.com)  Fax: 1-631-938-8127

 45-1 Ramsey Road, Shirley, NY 11967, USA

**Shipping** They are shipped out with dry ice/blue ice unless customers require otherwise.

## GENE INFORMATION

**Gene Name** [BCL2A1 BCL2-related protein A1 \[ Homo sapiens \(human\) \]](#)

**Official Symbol** [BCL2A1](#)

**Synonyms** BCL2A1; BCL2-related protein A1; HBPA1; bcl-2-related protein A1; ACC 1; ACC 2; BCL2L5; BFL1; GRS; bcl2-L-5; protein BFL-1; bcl-2-like protein 5; hematopoietic BCL2-related protein A1; hemopoietic-specific early response protein; ACC-1; ACC-2;

**Gene ID** [597](#)

**mRNA Refseq** [NM\\_001114735](#)

**Protein Refseq** [NP\\_001108207](#)

**MIM** [601056](#)

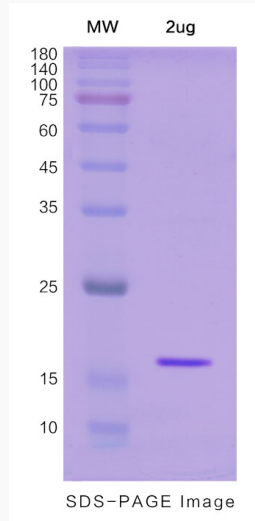
**UniProt ID** [Q16548](#)

 Tel: 1-631-559-9269 1-516-512-3133

 Email: [info@creative-biomart.com](mailto:info@creative-biomart.com)  Fax: 1-631-938-8127

 45-1 Ramsey Road, Shirley, NY 11967, USA

**SDS-PAGE**



 Tel: 1-631-559-9269 1-516-512-3133

 Email: [info@creative-biomart.com](mailto:info@creative-biomart.com)  Fax: 1-631-938-8127

 45-1 Ramsey Road, Shirley, NY 11967, USA