

Recombinant Human BCL2A1 Protein, His-tagged

Cat. No. BCL2A1-305H Lot. No. (See product label)

SPECIFICATION

Product Overview	Recombinant Human BCL2A1 Protein (Met1-Cys175) with N-His tag was expressed in E. coli.
Species	Human
Source	E.coli
ProteinLength	Met1-Cys175
Description	<p>This gene encodes a member of the BCL-2 protein family. The proteins of this family form hetero- or homodimers and act as anti- and pro-apoptotic regulators that are involved in a wide variety of cellular activities such as embryonic development, homeostasis and tumorigenesis. The protein encoded by this gene is able to reduce the release of pro-apoptotic cytochrome c from mitochondria and block caspase activation. This gene is a direct transcription target of NF-kappa B in response to inflammatory mediators, and is up-regulated by different extracellular signals, such as granulocyte-macrophage colony-stimulating factor (GM-CSF), CD40, phorbol ester and inflammatory cytokine TNF and IL-1, which suggests a cytoprotective function that is essential for lymphocyte activation as well as cell survival. Alternatively spliced transcript variants encoding different isoforms have been found for this gene.</p>
Form	Freeze-dried powder
Molecular Mass	Predicted Molecular Mass: 23.8 kDa Accurate Molecular Mass: 24 kDa

 Tel: 1-631-559-9269 1-516-512-3133

 Email: info@creative-biomart.com  Fax: 1-631-938-8127

 45-1 Ramsey Road, Shirley, NY 11967, USA

Purity	> 90%
Applications	Positive Control; Immunogen; SDS-PAGE; WB.
Stability	The thermal stability is described by the loss rate. The loss rate was determined by accelerated thermal degradation test, that is, incubate the protein at 37 centigrade for 48h, and no obvious degradation and precipitation were observed. The loss rate is less than 5% within the expiration date under appropriate storage condition.
Storage	Avoid repeated freeze/thaw cycles. Store at 2-8 centigrade for one month. Aliquot and store at -80 centigrade for 12 months.
Storage Buffer	20mM Tris, 150mM NaCl, pH8.0, containing 1mM EDTA, 1mM DTT, 0.01% SKL, 5% Trehalose and Proclin300.
Reconstitution	Reconstitute in sterile water to a concentration of 0.1-1.0 mg/mL. Do not vortex.

GENE INFORMATION

Gene Name	BCL2A1 BCL2-related protein A1 [Homo sapiens (human)]
Official Symbol	BCL2A1
Synonyms	BCL2A1; BCL2-related protein A1; HBPA1; bcl-2-related protein A1; ACC 1; ACC 2; BCL2L5; BFL1; GRS; bcl2-L-5; protein BFL-1; bcl-2-like protein 5; hematopoietic BCL2-related protein A1; hemopoietic-specific early response protein; ACC-1; ACC-2
Gene ID	597
mRNA Refseq	NM_001114735

 Tel: 1-631-559-9269 1-516-512-3133

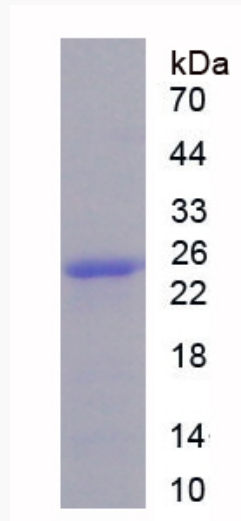
 Email: info@creative-biomart.com  Fax: 1-631-938-8127

 45-1 Ramsey Road, Shirley, NY 11967, USA

Protein Refseq NP_001108207

MIM 601056

UniProt ID Q16548



 Tel: 1-631-559-9269 1-516-512-3133

 Email: info@creative-biomart.com  Fax: 1-631-938-8127

 45-1 Ramsey Road, Shirley, NY 11967, USA