

Recombinant Human BCL2L1 protein, His-tagged

Cat. No. BCL2L1-10191H Lot. No. (See product label)

SPECIFICATION

Product Overview	Recombinant Human BCL2L1 protein(1-233 aa), fused with N-terminal His tag, was expressed in E. coli.
Species	Human
Source	E.coli
ProteinLength	1-233 aa
Tag	N-His
Form	The purified protein was Lyophilized from sterile PBS (58mM Na ₂ HPO ₄ , 17mM NaH ₂ PO ₄ , 68mM NaCl, pH7.4). 5 % trehalose and 5 % mannitol are added as protectant before lyophilization.
Purity	85%, by SDS-PAGE with Coomassie Brilliant Blue staining.
Storage	Short-term storage: Store at 2-8°C for (1-2 weeks). Long-term storage: Aliquot and store at -20°C to -80°C for up to 3 months, reconstitution with sterile water and addition of an equal volume of glycerol. Avoid repeat freeze-thaw cycles.
Reconstitution	Reconstitute at 0.25 µg/µl in 200 µl sterile water for short-term storage. After reconstitution with sterile water, if glycerol has no effect on subsequent experiments, it is recommended to add an equal volume of glycerol for long-term storage.

 Tel: 1-631-559-9269 1-516-512-3133

 Email: info@creative-biomart.com  Fax: 1-631-938-8127

 45-1 Ramsey Road, Shirley, NY 11967, USA

AA Sequence

MSQSNRELVVDFLSYKLSQKGYSSWSQFSDVEENRTEAPEGTESEMETPSAINGNP
 SWHLADSPAVNGATGHSSSLDAREVIPMAAVKQALREAGDEFELRYRRAFSDLTSQ
 LHITPGTAYQSFEQVVNELFRDGVNWGRIVAFFSFGGALCVESVDKEMQVLVSRIAA
 WMATYLNHLEPWIQENGGWDTFVELYGNNAAAESRKGQERFNRWFLTGMTVAG
 VVLLGSLFSRK

GENE INFORMATION

Gene Name [BCL2L1 BCL2-like 1 \[Homo sapiens \]](#)

Official Symbol [BCL2L1](#)

Synonyms BCL2L1; BCL2-like 1; bcl-2-like protein 1; Bcl X; bcl xL; bcl xS; BCL2L; BCLX; PPP1R52; protein phosphatase 1; regulatory subunit 52; apoptosis regulator Bcl-X; protein phosphatase 1, regulatory subunit 52; BCLXL; BCLXS; Bcl-X; bcl-xL; bcl-xS; BCL-XL/S; DKFZp781P2092;

Gene ID [598](#)

mRNA Refseq [NM_001191](#)

Protein Refseq [NP_001182](#)

MIM [600039](#)

UniProt ID [Q07817](#)

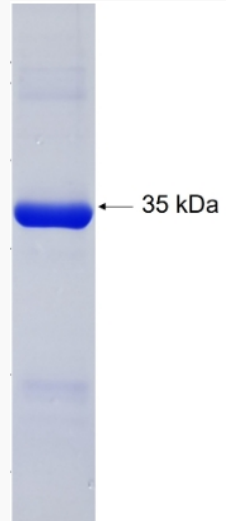
 Tel: 1-631-559-9269 1-516-512-3133

 Email: info@creative-biomart.com  Fax: 1-631-938-8127

 45-1 Ramsey Road, Shirley, NY 11967, USA



SDS-PAGE



Tel: 1-631-559-9269 1-516-512-3133

Email: info@creative-biomart.com Fax: 1-631-938-8127

45-1 Ramsey Road, Shirley, NY 11967, USA