

# Active Recombinant Full Length Human BCL2L1 Protein, C-Flag-tagged

**Cat. No.** BCL2L1-287HFL    **Lot. No.** (See product label)

## SPECIFICATION

### Product Overview

Recombinant Full Length Human BCL2L1 Protein, fused to Flag-tag at C-terminus, was expressed in Mammalian cells.

### Species

Human

### Source

Mammalian Cells

### Description

The protein encoded by this gene belongs to the BCL-2 protein family. BCL-2 family members form hetero- or homodimers and act as anti- or pro-apoptotic regulators that are involved in a wide variety of cellular activities. The proteins encoded by this gene are located at the outer mitochondrial membrane, and have been shown to regulate outer mitochondrial membrane channel (VDAC) opening. VDAC regulates mitochondrial membrane potential, and thus controls the production of reactive oxygen species and release of cytochrome C by mitochondria, both of which are the potent inducers of cell apoptosis. Alternative splicing results in multiple transcript variants encoding two different isoforms. The longer isoform acts as an apoptotic inhibitor and the shorter isoform acts as an apoptotic activator.

### Form

25 mM Tris HCl, pH 7.3, 100 mM glycine, 10% glycerol.

### Bio-activity

In vitro ubiquitination assay substrate

### Molecular Mass

25.9 kDa

 Tel: 1-631-559-9269    1-516-512-3133

 Email: [info@creative-biomart.com](mailto:info@creative-biomart.com)     Fax: 1-631-938-8127

 45-1 Ramsey Road, Shirley, NY 11967, USA

<b>AA Sequence</b>	MSQSNRELVVDFLSYKLSQKGYSSWSQFSDVEENRTEAPEGTESEMETPSAINGNP SWHLADSPAVNGATG HSSSLDAREVIPMAAVKQALREAGDEFELRYRRAFSDLTS QLHITPGTAYQSFEQVVNELFRDGVNWGRI VAFFSFGGALCVESVDKEMQVLVSRI AAWMATYLNHLEPWIQENGGWDTFVELYGNNAAAESRKGQERF NRWFLTGMTVAGVVLLGSLFSRKTRTRPLEQKLISEEDLAANDILDYKDDDDKV
<b>Purity</b>	> 80% as determined by SDS-PAGE and Coomassie blue staining.
<b>Stability</b>	Stable for 12 months from the date of receipt of the product under proper storage and handling conditions. Avoid repeated freeze-thaw cycles.
<b>Storage</b>	Store at -80 centigrade.
<b>Concentration</b>	>50 ug/mL as determined by microplate BCA method.
<b>Preparation</b>	Recombinant protein was captured through anti-DDK affinity column followed by conventional chromatography steps.
<b>Protein Families</b>	Druggable Genome, ES Cell Differentiation/IPS, Transmembrane
<b>Protein Pathways</b>	Amyotrophic lateral sclerosis (ALS), Apoptosis, Chronic myeloid leukemia, Jak-STAT signaling pathway, Pancreatic cancer, Pathways in cancer, Small cell lung cancer
<b>Full Length</b>	Full L.

## GENE INFORMATION

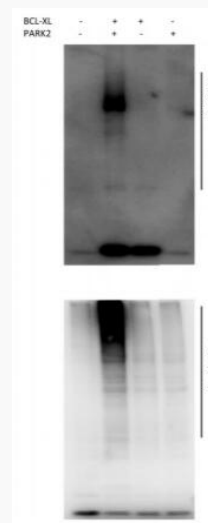
<b>Gene Name</b>	<a href="#">BCL2L1 BCL2 like 1 [ Homo sapiens (human) ]</a>
<b>Official Symbol</b>	<a href="#">BCL2L1</a>

 Tel: 1-631-559-9269 1-516-512-3133


 Email: [info@creative-biomart.com](mailto:info@creative-biomart.com)  Fax: 1-631-938-8127

 45-1 Ramsey Road, Shirley, NY 11967, USA

<b>Synonyms</b>	BCLX; BCL2L; Bcl-X; PPP1R52; BCL-XL/S
<b>Gene ID</b>	598
<b>mRNA Refseq</b>	NM_138578.3
<b>Protein Refseq</b>	NP_612815.1
<b>MIM</b>	600039
<b>UniProt ID</b>	Q07817

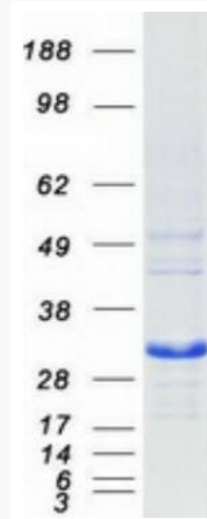


PARK2 E3 ubiquitin ligase ubiquitinates BCL-XL in vitro. Recombinant proteins BCL-XL and PARK2 were incubated in HEPES buffer, pH 8.0 containing E1, E2, ubiquitin, and Mg<sup>2+</sup>-ATP. Reactions were cultured for 10 min at 30 centigrade, then 30-60 min at 37 centigrade, and reaction samples were subjected to Western blot analysis.

 Tel: 1-631-559-9269 1-516-512-3133

 Email: [info@creative-biomart.com](mailto:info@creative-biomart.com)  Fax: 1-631-938-8127

 45-1 Ramsey Road, Shirley, NY 11967, USA



Coomassie blue staining of purified BCL2L1 protein.

 Tel: 1-631-559-9269 1-516-512-3133

 Email: [info@creative-biomart.com](mailto:info@creative-biomart.com)  Fax: 1-631-938-8127

 45-1 Ramsey Road, Shirley, NY 11967, USA