

Recombinant Human BCL2L1 protein, GST-tagged

Cat. No. BCL2L1-323H Lot. No. (See product label)

SPECIFICATION

Product Overview	Recombinant Human BCL2L1 protein (Met1-Arg212), fused to GST tag at N-terminus, was expressed in E.coli.
Species	Human
Source	E.coli
ProteinLength	212
Description	<p>Bcl-2-like protein 1 (BCL2L1), is also known as Apoptosis regulator Bcl-X (Bcl-XL). BCL2L1/Bcl-XL is a homodimer protein and belongs to the Bcl-2 family. BCL2L1 is expressed at high levels in cells that undergo a high rate of turnover, such as developing lymphocytes. BCL2L1 is a potent inhibitor of cell death. BCL2L1 Inhibits activation of caspases. BCL2L1 appears to regulate cell death by blocking the voltage-dependent anion channel (VDAC) by binding to it and preventing the release of the caspase activator, CYC1, from the mitochondrial membrane. BCL2L1/Bcl-XL also acts as a regulator of G2 checkpoint and progression to cytokinesis during mitosis.</p>
Form	Lyophilized from 0.22 um filtered solution in 20 mM Tris, 100 mM NaCl, pH7.5 with 10 mM GSH, 10% trehalose.
Molecular Mass	The protein has a calculated MW of 50.5 kDa. The protein migrates as 46 kDa under reducing (R) condition (SDS-PAGE).

 Tel: 1-631-559-9269 1-516-512-3133

 Email: info@creative-biomart.com  Fax: 1-631-938-8127

 45-1 Ramsey Road, Shirley, NY 11967, USA

Endotoxin	Less than 1.0 EU per ug by the LAL method.
Purity	>92% as determined by SDS-PAGE.
Storage	<p>For long term storage, the product should be stored at lyophilized state at -20 centigrade or lower.</p> <p>Please avoid repeated freeze-thaw cycles.</p> <p>This product is stable after storage at:</p> <p>-20 centigrade to -70 centigrade for 12 months in lyophilized state; -70 centigrade for 3 months under sterile conditions after reconstitution.</p>
Reconstitution	It is recommended that sterile water be added to the vial to prepare a stock solution of 0.2 ug/ul. Centrifuge the vial at 4°C before opening to recover the entire contents.

GENE INFORMATION

Gene Name	BCL2L1
Official Symbol	BCL2L1
Synonyms	BCL2L1; BCL2-like 1; bcl-2-like protein 1; Bcl X; bcl xL; bcl xS; BCL2L; BCLX; PPP1R52; protein phosphatase 1; regulatory subunit 52; apoptosis regulator Bcl-X; protein phosphatase 1, regulatory subunit 52; BCLXL; BCLXS; Bcl-X; bcl-xL; bcl-xS; BCL-XL/S; DKFZp781P2092
Gene ID	598
mRNA Refseq	NM_001191
Protein Refseq	NP_001182

 Tel: 1-631-559-9269 1-516-512-3133

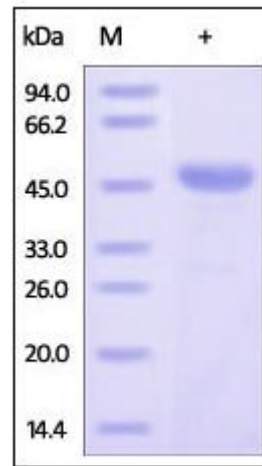
 Email: info@creative-biomart.com  Fax: 1-631-938-8127

 45-1 Ramsey Road, Shirley, NY 11967, USA

MIM 600039

UniProt ID Q07817

**SDS-PAGE of
BCL2L1-323H**



Human Bcl-x, GST Tag on SDS-PAGE under reducing (R) condition. The gel was stained overnight with Coomassie Blue. The purity of the protein is greater than 92%.

Tel: 1-631-559-9269 1-516-512-3133

Email: info@creative-biomart.com Fax: 1-631-938-8127

45-1 Ramsey Road, Shirley, NY 11967, USA