

Active Recombinant Human BCL2L1 protein, His-tagged

Cat. No. BCL2L1-6872H Lot. No. (See product label)

SPECIFICATION

Product Overview	Active Recombinant Human BCL2L1 protein(NP_612815.1) (Met 1-Arg 212) was expressed in E. coli, fused with a polyhistidine tag at the C-terminus.
Species	Human
Source	E. coli
ProteinLength	1-212 aa
Form	Lyophilized from sterile 20mM Tris, pH 8.0.
Bio-activity	Measured by its binding ability in a functional ELISA. 1. Immobilized human BID at 10 µg/mL (100 µl/well) can bind biotinylated human BCL2L1, The EC50 of biotinylated human BCL2L1 is 7.1 ng/mL. 2. Immobilized mouse BID at 10 µg/mL (100 µl/well) can bind biotinylated human BCL2L1, The EC50 of biotinylated human BCL2L1 is 7.01 ng/mL.
Molecular Mass	The recombinant human BCL2L1 consisting of 222 amino acids and has a calculated molecular mass of 25.2 kDa. It migrates as an approximately 32 kDa band in SDS-PAGE under reducing conditions.
Purity	> 85 % as determined by SDS-PAGE
Storage	Store it under sterile conditions at -20°C to -80°C upon receiving. Recommend to aliquot the protein into smaller quantities for optimal storage. Avoid repeated freeze-

 Tel: 1-631-559-9269 1-516-512-3133

 Email: info@creative-biomart.com  Fax: 1-631-938-8127

 45-1 Ramsey Road, Shirley, NY 11967, USA

thaw cycles.

Reconstitution

It is recommended that sterile water be added to the vial to prepare a stock solution of 0.2 ug/ul. Centrifuge the vial at 4°C before opening to recover the entire contents.

GENE INFORMATION

Gene Name [BCL2L1 BCL2-like 1 \[Homo sapiens \]](#)

Official Symbol [BCL2L1](#)

Synonyms

BCL2L1; BCL2-like 1; bcl-2-like protein 1; Bcl X; bcl xL; bcl xS; BCL2L; BCLX; PPP1R52; protein phosphatase 1; regulatory subunit 52; apoptosis regulator Bcl-X; protein phosphatase 1, regulatory subunit 52; BCLXL; BCLXS; Bcl-X; bcl-xL; bcl-xS; BCL-XL/S; DKFZp781P2092;

Gene ID [598](#)

mRNA Refseq [NM_001191](#)

Protein Refseq [NP_001182](#)

MIM [600039](#)

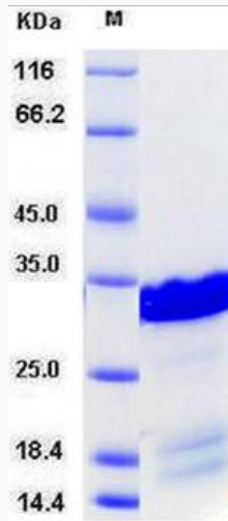
UniProt ID [Q07817](#)

 Tel: 1-631-559-9269 1-516-512-3133

 Email: info@creative-biomart.com  Fax: 1-631-938-8127

 45-1 Ramsey Road, Shirley, NY 11967, USA

SDS-PAGE



 Tel: 1-631-559-9269 1-516-512-3133

 Email: info@creative-biomart.com  Fax: 1-631-938-8127

 45-1 Ramsey Road, Shirley, NY 11967, USA