

## Recombinant Human BCL2L11 protein, His-tagged

Cat. No. BCL2L11-3454H Lot. No. (See product label)

### SPECIFICATION

<b>Product Overview</b>	Recombinant Human BCL2L11 protein(O43521)(1-198aa), fused with N-terminal His tag, was expressed in E.coli.
<b>Species</b>	Human
<b>Source</b>	E.coli
<b>ProteinLength</b>	1-198a.a.
<b>Tag</b>	His
<b>Form</b>	If the delivery form is liquid, the default storage buffer is Tris/PBS-based buffer, 5%-50% glycerol. If the delivery form is lyophilized powder, the buffer before lyophilization is Tris/PBS-based buffer, 6% Trehalose, pH 8.0.
<b>Molecular Mass</b>	26.2 kDa
<b>Purity</b>	Greater than 85% as determined by SDS-PAGE.
<b>Storage</b>	Store at -20°C/-80°C upon receipt, aliquoting is necessary for mutiple use. Avoid repeated freeze-thaw cycles.
<b>Reconstitution</b>	We recommend that this vial be briefly centrifuged prior to opening to bring the contents to the bottom. Please reconstitute protein in deionized sterile water to a concentration of 0.1-1.0 mg/mL.We recommend to add 5-50% of glycerol (final

 Tel: 1-631-559-9269 1-516-512-3133

 Email: [info@creative-biomart.com](mailto:info@creative-biomart.com)  Fax: 1-631-938-8127

 45-1 Ramsey Road, Shirley, NY 11967, USA

concentration) and aliquot for long-term storage at -20°C/-80°C.

**AA Sequence**

MAKQPSDVSSECDREGRQLQPAERPPQLRPGAPTSLQTEPQGNPEGNHGGEGDS  
 CPHGSPQGPLAPPASPGPFATRSPFLFIFMRRSSLLSRSSSGYFSFDTRSPAPMSC  
 DKSTQTPSPPCQAFNHYLSAMASMRQAEPADMRPEIWIAQELRRIGDEFNAYYARR  
 VFLNNYQAAEDHPRMVILRLLRYIVRLVWRMH

## GENE INFORMATION

**Gene Name** [BCL2L11](#) BCL2-like 11 (apoptosis facilitator) [ *Homo sapiens* ]

**Official Symbol** [BCL2L11](#)

**Synonyms** BCL2L11; BCL2-like 11 (apoptosis facilitator); bcl-2-like protein 11; BIM; BimEL; BimL; BOD; bcl2-L-11; bcl-2 interacting protein Bim; bcl-2-related ovarian death agonist; bcl-2 interacting mediator of cell death; BAM; BIM-beta6; BIM-beta7; BIM-alpha6;

**Gene ID** [10018](#)

**mRNA Refseq** [NM\\_001204106](#)

**Protein Refseq** [NP\\_001191035](#)

**MIM** [603827](#)

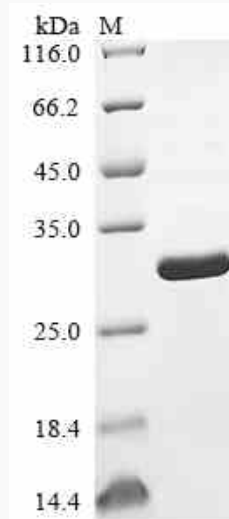
**UniProt ID** [O43521](#)

 Tel: 1-631-559-9269 1-516-512-3133

 Email: [info@creative-biomart.com](mailto:info@creative-biomart.com)  Fax: 1-631-938-8127

 45-1 Ramsey Road, Shirley, NY 11967, USA

**SDS-PAGE**



 Tel: 1-631-559-9269 1-516-512-3133

 Email: [info@creative-biomart.com](mailto:info@creative-biomart.com)  Fax: 1-631-938-8127

 45-1 Ramsey Road, Shirley, NY 11967, USA