

Recombinant Human BCL2L12 Protein, Myc/DDK-tagged, C13 and N15-labeled

Cat. No. BCL2L12-2821H Lot. No. (See product label)

SPECIFICATION

Product Overview	BCL2L12 MS Standard C13 and N15-labeled recombinant protein (NP_619580) with a C-terminal MYC/DDK tag, was expressed in HEK293 cells.
Species	Human
Source	HEK293
Description	<p>This gene encodes a member of a family of proteins containing a Bcl-2 homology domain 2 (BH2). The encoded protein is an anti-apoptotic factor that acts as an inhibitor of caspases 3 and 7 in the cytoplasm. In the nucleus, it binds to the p53 tumor suppressor protein, preventing its association with target genes.</p> <p>Overexpression of this gene has been detected in a number of different cancers. There is a pseudogene for this gene on chromosome 3. Alternative splicing results in multiple transcript variants.</p>
Molecular Mass	36.6 kDa
AA Sequence	<p>MGRPAGLFPPLCPFLGFRPEACWERHMQIERAPSVPPFLRWAGYRPGPVRRRGKV ELIKFVRVQWRRPQVEWRRRRWGPGGASMGSEELGLREDTLRVLA AFLRRGEA AGSPVPTPPRSPAQEEPTDFLSRLRRLPCSLGRGAAPSESPRPCSLPIRPCYGLEP GPATPDFYALVAQRLEQLVQEQLKSPSPPELQGPPSTEKEAILRRLVALLEEEAEVIN QKLASDPALRSKLVRLSSDSFARLVLFCSRDDSSRPSRACGPPPPSPEPLARLAL AMELSRRVAGLGGTLAGLSVEHVHSFTPWIQAHHGGWEGILAVSPVDLNLPLDTRTR</p>

 Tel: 1-631-559-9269 1-516-512-3133

 Email: info@creative-biomart.com  Fax: 1-631-938-8127

 45-1 Ramsey Road, Shirley, NY 11967, USA



PLEQKLISEEDLAANDILDYKDDDDKV

Purity > 80% as determined by SDS-PAGE and Coomassie blue staining

Stability Stable for 3 months from receipt of products under proper storage and handling conditions.

Storage Store at -80 centigrade. Avoid repeated freeze-thaw cycles.

Concentration 50 µg/mL as determined by BCA

Storage Buffer 100 mM glycine, 25 mM Tris-HCl, pH 7.3.

GENE INFORMATION

Gene Name [BCL2L12 BCL2 like 12 \[Homo sapiens \(human\) \]](#)

Official Symbol [BCL2L12](#)

Synonyms BCL2L12; BCL2-like 12 (proline rich); bcl-2-like protein 12; bcl2-L-12; Bcl-2 related proline-rich protein; bcl-2-related proline-rich protein; MGC120313; MGC120314; MGC120315;

Gene ID [83596](#)

mRNA Refseq [NM_138639](#)

Protein Refseq [NP_619580](#)

MIM [610837](#)

Tel: 1-631-559-9269 1-516-512-3133

Email: info@creative-biomart.com Fax: 1-631-938-8127

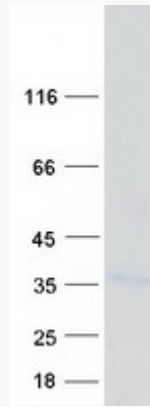
45-1 Ramsey Road, Shirley, NY 11967, USA



UniProt ID

Q9HB09

SDS-PAGE



Tel: 1-631-559-9269 1-516-512-3133

Email: info@creative-biomart.com Fax: 1-631-938-8127

45-1 Ramsey Road, Shirley, NY 11967, USA