

# Recombinant Human BCL2L13 Protein, Myc/DDK-tagged, C13 and N15-labeled

Cat. No. BCL2L13-6083H Lot. No. (See product label)

## SPECIFICATION

### Product Overview

BCL2L13 MS Standard C13 and N15-labeled recombinant protein (NP\_056182) with a C-terminal MYC/DDK tag, was expressed in HEK293 cells.

### Species

Human

### Source

HEK293

### Description

This gene encodes a mitochondrially-localized protein with conserved B-cell lymphoma 2 homology motifs. Overexpression of the encoded protein results in apoptosis. Alternatively spliced transcript variants have been observed for this gene.

### Molecular Mass

52.7 kDa

### AA Sequence

MASSTVPLGFHYETKYVVLSYLGLLSQEKLQEQLSSPQGVQLDIASQSLDQEILL  
 KVKTEIEEELKSLDKEISEAFTSTGFDRHTSPVFSPANPESSMEDCLAHLGEKVSQEL  
 KEPLHKALQMLLSQPVTYQAFRECTLETTVHASGWNKILVPLVLLRQMLLELTRGQ  
 EPLSALLQFGVTYLEDYSAEYIIQQGGWGTVFSLESEEEEYPGITAEDSNDIYILPSDN  
 SGQVSPPESTVTTTSWQSESLPVLSASQSWHTESLPVSLGPESWQQIAMDPEEV  
 KSLDSNGAGEKSENNSSNSDIVHVEKEEVPEGMEEAAVASVVLPAELQEALPEAP  
 APLLPHITATSLTGTRES DTEVITVEKSSPATSLFVELDEEEVKAATTEPTEVEEVVPA  
 LEPTETLLSEKEINAREESLVEELSPASEKKVPPSEGGKSRSLSPAGEMKPMPLSEGK  
 SILLFGGAAAVAILAVAIGVALALRKKTRTRPLEQKLISEEDLAANDILDYKDDDDKV

### Purity

> 80% as determined by SDS-PAGE and Coomassie blue staining

 Tel: 1-631-559-9269 1-516-512-3133

 Email: [info@creative-biomart.com](mailto:info@creative-biomart.com)  Fax: 1-631-938-8127

 45-1 Ramsey Road, Shirley, NY 11967, USA

<b>Stability</b>	Stable for 3 months from receipt of products under proper storage and handling conditions.
<b>Storage</b>	Store at -80 centigrade. Avoid repeated freeze-thaw cycles.
<b>Concentration</b>	50 µg/mL as determined by BCA
<b>Storage Buffer</b>	100 mM glycine, 25 mM Tris-HCl, pH 7.3.

## GENE INFORMATION

<b>Gene Name</b>	<a href="#">BCL2L13 BCL2 like 13 [ Homo sapiens (human) ]</a>
<b>Official Symbol</b>	<a href="#">BCL2L13</a>
<b>Synonyms</b>	BCL2L13; BCL2-like 13 (apoptosis facilitator); bcl-2-like protein 13; BCL RAMBO; MIL1; Protein Mil1; BCL-RAMBO; Bcl2-L-13;
<b>Gene ID</b>	<a href="#">23786</a>
<b>mRNA Refseq</b>	<a href="#">NM_015367</a>
<b>Protein Refseq</b>	<a href="#">NP_056182</a>
<b>UniProt ID</b>	<a href="#">Q9B XK5</a>

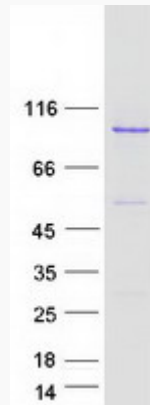
 Tel: 1-631-559-9269 1-516-512-3133

 Email: [info@creative-biomart.com](mailto:info@creative-biomart.com)  Fax: 1-631-938-8127

 45-1 Ramsey Road, Shirley, NY 11967, USA



SDS-PAGE



Tel: 1-631-559-9269 1-516-512-3133

Email: [info@creative-biomart.com](mailto:info@creative-biomart.com) Fax: 1-631-938-8127

45-1 Ramsey Road, Shirley, NY 11967, USA