

## Recombinant Human BCL2L15 Protein (1-163 aa), GST-tagged

Cat. No. BCL2L15-2132H Lot. No. (See product label)

### SPECIFICATION

<b>Product Overview</b>	Recombinant Human BCL2L15 Protein (1-163 aa) is produced by E. coli expression system. This protein is fused with a GST tag at the N-terminal. Protein Description: Full Length of BC127719.
<b>Species</b>	Human
<b>Source</b>	E.coli
<b>ProteinLength</b>	1-163 aa
<b>Form</b>	Tris-based buffer,50% glycerol
<b>Molecular Mass</b>	44.7 kDa
<b>AA Sequence</b>	MKSSQTFEEQTECIVNTLLMDFLSPTLQVASRNLCCVDEVDSGEPSCSFDVAIIAGRL RMLGDQFNGELEASAKNVIAETIKGQTGAILQNTVESLSKTWCAQDSSLAYERAFLA VSVKLLLEYMAHIAPEVVGQVAIPMTGMINGNQAIREFIQGGGWENLES
<b>Purity</b>	> 90% as determined by SDS-PAGE.
<b>Notes</b>	Repeated freezing and thawing is not recommended. Store working aliquots at 4 centigrade for up to one week.
<b>Storage</b>	The shelf life is related to many factors, storage state, buffer ingredients, storage temperature and the stability of the protein itself. Generally, the shelf life of liquid form

 Tel: 1-631-559-9269 1-516-512-3133

 Email: [info@creative-biomart.com](mailto:info@creative-biomart.com)  Fax: 1-631-938-8127

 45-1 Ramsey Road, Shirley, NY 11967, USA

is 6 months at -20 centigrade/-80 centigrade. The shelf life of lyophilized form is 12 months at -20 centigrade/-80 centigrade.

**Concentration**

A hardcopy of COA will be sent along with the products. Please refer to it for detailed information.

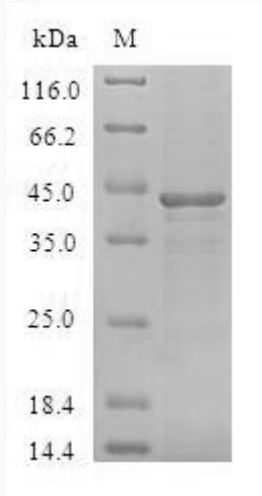
**GENE INFORMATION**

<b>Gene Name</b>	BCL2L15 BCL2-like 15 [ Homo sapiens ]
<b>Official Symbol</b>	BCL2L15
<b>Synonyms</b>	BCL2L15; BCL2-like 15; Bfk; FLJ22588; bcl2-L-15; C1orf178;
<b>Gene ID</b>	440603
<b>mRNA Refseq</b>	NM_001010922
<b>Protein Refseq</b>	NP_001010922
<b>UniProt ID</b>	Q5TBC7

 Tel: 1-631-559-9269 1-516-512-3133

 Email: [info@creative-biomart.com](mailto:info@creative-biomart.com)  Fax: 1-631-938-8127

 45-1 Ramsey Road, Shirley, NY 11967, USA



(Tris-Glycine gel) Discontinuous SDS-PAGE (reduced) with 5% enrichment gel and 15% separation gel.

 Tel: 1-631-559-9269 1-516-512-3133

 Email: [info@creative-biomart.com](mailto:info@creative-biomart.com)  Fax: 1-631-938-8127

 45-1 Ramsey Road, Shirley, NY 11967, USA