

## Recombinant Human BCL2L2 protein

**Cat. No.** BCL2L2-1588H    **Lot. No.** (See product label)

### SPECIFICATION

<b>Product Overview</b>	Recombinant Human BCL2L2 protein was expressed in Escherichia coli.
<b>Species</b>	Human
<b>Source</b>	E.coli
<b>ProteinLength</b>	171
<b>Description</b>	This gene encodes a member of the BCL-2 protein family. The proteins of this family form hetero- or homodimers and act as anti- and pro-apoptotic regulators. Expression of this gene in cells has been shown to contribute to reduced cell apoptosis under cytotoxic conditions. Studies of the related gene in mice indicated a role in the survival of NGF- and BDNF-dependent neurons. Mutation and knockout studies of the mouse gene demonstrated an essential role in adult spermatogenesis. Alternative splicing results in multiple transcript variants. Read-through transcription also exists between this gene and the neighboring downstream PABPN1 (poly(A) binding protein, nuclear 1) gene.
<b>Form</b>	0.2µm Filtered concentrated solution in 25 mM Hepes, pH 7.4, 100 mM KCl, 10 % Glycerol, 5 % Trehalose, 0.02 % Tween-80.
<b>Molecular Mass</b>	Approximately 18.6 kDa, a single non-glycosylated polypeptide chain containing 171 amino acids.
<b>AA Sequence</b>	ATPASAPDTRALVADDFVGYKLRQKGYVCGAGPGEGPAADPLHQAMRAAGDEFETR

 Tel: 1-631-559-9269    1-516-512-3133

 Email: [info@creative-biomart.com](mailto:info@creative-biomart.com)     Fax: 1-631-938-8127

 45-1 Ramsey Road, Shirley, NY 11967, USA

FRRTFSDLAAQLHVTPGSAQQRFTQVSDSELFQGGPNWGRLVAFFVFGAALCAESV  
 NKEMEPLVGQVQEWMVAYLETQLADWIHSSGGWAEFTALYGDGALEEARRLREG  
 NWASVRT

**Endotoxin** Less than 1 EU/g of rHuBcl-w as determined by LAL method.

**Purity** >95% by SDS-PAGE and HPLC analysis.

**Storage** Use a manual defrost freezer and avoid repeated freeze-thaw cycles. 6 months from date of receipt, -20 to -70 centigrade as supplied. 3 months, -20 to -70 centigrade under sterile conditions after opening.

## GENE INFORMATION

**Gene Name** [BCL2L2](#)

**Official Symbol** [BCL2L2](#)

**Synonyms** BCL2L2; BCL2-like 2; bcl-2-like protein 2; BCL W; KIAA0271; PPP1R51; protein phosphatase 1; regulatory subunit 51; apoptosis regulator BCL-W; protein phosphatase 1, regulatory subunit 51; BCLW; BCL-W; BCL2-L-2;

**Gene ID** [599](#)

**mRNA Refseq** [NM\\_001199839](#)

**Protein Refseq** [NP\\_001186768](#)

**MIM** [601931](#)

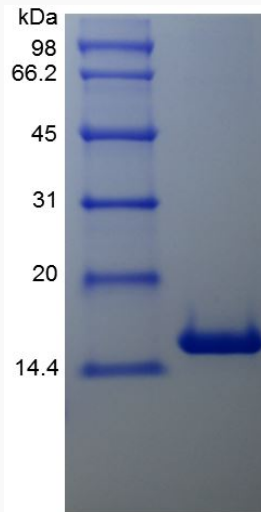
**UniProt ID** [Q92843](#)

 Tel: 1-631-559-9269 1-516-512-3133

 Email: [info@creative-biomart.com](mailto:info@creative-biomart.com)  Fax: 1-631-938-8127

 45-1 Ramsey Road, Shirley, NY 11967, USA

**SDS-PAGE of  
BCL2L2-1588H**



 Tel: 1-631-559-9269 1-516-512-3133

 Email: [info@creative-biomart.com](mailto:info@creative-biomart.com)  Fax: 1-631-938-8127

 45-1 Ramsey Road, Shirley, NY 11967, USA