

Recombinant Full Length Human BCL2L2 Protein, C-Flag-tagged

Cat. No. BCL2L2-1821HFL **Lot. No.** (See product label)

SPECIFICATION

Product Overview	Recombinant Full Length Human BCL2L2 Protein, fused to Flag-tag at C-terminus, was expressed in Mammalian cells.
Species	Human
Source	Mammalian Cells
Description	This gene encodes a member of the BCL-2 protein family. The proteins of this family form hetero- or homodimers and act as anti- and pro-apoptotic regulators. Expression of this gene in cells has been shown to contribute to reduced cell apoptosis under cytotoxic conditions. Studies of the related gene in mice indicated a role in the survival of NGF- and BDNF-dependent neurons. Mutation and knockout studies of the mouse gene demonstrated an essential role in adult spermatogenesis. Alternative splicing results in multiple transcript variants. Read-through transcription also exists between this gene and the neighboring downstream PABPN1 (poly(A) binding protein, nuclear 1) gene.
Form	25 mM Tris HCl, pH 7.3, 100 mM glycine, 10% glycerol.
Molecular Mass	20.6 kDa
AA Sequence	MATPASAPDTRALVADDFVGYKLRQKGYVCGAGPGEGPAADPLHQAMRAAGDEFET RFRRTFSDLAAQLHV TPGSAQQRFTQVSDLELFQGGPNWGRLVAFFVFGAALCAES VNKEMEPLVGQVQEWVMVAYLETRLADWIHS SGGWAEFTALYGDGALEEARRLRE

 Tel: 1-631-559-9269 1-516-512-3133

 Email: info@creative-biomart.com  Fax: 1-631-938-8127

 45-1 Ramsey Road, Shirley, NY 11967, USA

	GNWASVRTVLTGAVALGALVTVGAFFASK TRTRPLEQKLISEEDLAANDILDYKDDD DKV
Purity	> 80% as determined by SDS-PAGE and Coomassie blue staining.
Stability	Stable for 12 months from the date of receipt of the product under proper storage and handling conditions. Avoid repeated freeze-thaw cycles.
Storage	Store at -80 centigrade.
Concentration	>50 ug/mL as determined by microplate BCA method.
Preparation	Recombinant protein was captured through anti-DDK affinity column followed by conventional chromatography steps.
Protein Families	Druggable Genome, Transmembrane
Full Length	Full L.

GENE INFORMATION

Gene Name	BCL2L2 BCL2 like 2 [Homo sapiens (human)]
Official Symbol	BCL2L2
Synonyms	BCLW; BCL-W; PPP1R51; BCL2-L-2
Gene ID	599
mRNA Refseq	NM_004050.5

 Tel: 1-631-559-9269 1-516-512-3133

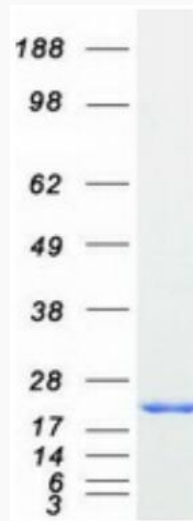
 Email: info@creative-biomart.com  Fax: 1-631-938-8127

 45-1 Ramsey Road, Shirley, NY 11967, USA

Protein Refseq NP_004041.2

MIM 601931

UniProt ID Q92843



Coomassie blue staining of purified BCL2L2 protein.

 Tel: 1-631-559-9269 1-516-512-3133

 Email: info@creative-biomart.com  Fax: 1-631-938-8127

 45-1 Ramsey Road, Shirley, NY 11967, USA