

Recombinant Human BCL2L2 Protein, Myc/DDK-tagged, C13 and N15-labeled

Cat. No. BCL2L2-5179H **Lot. No.** (See product label)

SPECIFICATION

Product Overview

BCL2L2 MS Standard C13 and N15-labeled recombinant protein (NP_004041) with a C-terminal MYC/DDK tag, was expressed in HEK293 cells.

Species

Human

Source

HEK293

Description

This gene encodes a member of the BCL-2 protein family. The proteins of this family form hetero- or homodimers and act as anti- and pro-apoptotic regulators. Expression of this gene in cells has been shown to contribute to reduced cell apoptosis under cytotoxic conditions. Studies of the related gene in mice indicated a role in the survival of NGF- and BDNF-dependent neurons. Mutation and knockout studies of the mouse gene demonstrated an essential role in adult spermatogenesis. Alternative splicing results in multiple transcript variants. Read-through transcription also exists between this gene and the neighboring downstream PABPN1 (poly(A) binding protein, nuclear 1) gene.

Molecular Mass

20.8 kDa

AA Sequence

MATPASAPDTRALVADDFVGYKLRQKGYVCGAGPGEGPAADPLHQAMRAAGDEFET
RFRRTFSDLAAQLHVTPGSAQQRFTQVSDelfQGGPNWGRLVAFFVFGAALCAES
VNKEMEPLVGQVQEWVMVAYLETRLADWIHSSGGWAEFTALYGDGALEEARRLREG
Nwasvrtvltgavalgalvtvgaffasktrtrpleqkliseedlaandildykdddd

 Tel: 1-631-559-9269 1-516-512-3133

 Email: info@creative-biomart.com  Fax: 1-631-938-8127

 45-1 Ramsey Road, Shirley, NY 11967, USA

	KV
Purity	> 80% as determined by SDS-PAGE and Coomassie blue staining
Stability	Stable for 3 months from receipt of products under proper storage and handling conditions.
Storage	Store at -80 centigrade. Avoid repeated freeze-thaw cycles.
Concentration	50 µg/mL as determined by BCA
Storage Buffer	100 mM glycine, 25 mM Tris-HCl, pH 7.3.
GENE INFORMATION	
Gene Name	BCL2L2 BCL2-like 2 [Homo sapiens (human)]
Official Symbol	BCL2L2
Synonyms	BCL2L2; BCL2-like 2; bcl-2-like protein 2; BCL W; KIAA0271; PPP1R51; protein phosphatase 1; regulatory subunit 51; apoptosis regulator BCL-W; protein phosphatase 1, regulatory subunit 51; BCLW; BCL-W; BCL2-L-2;
Gene ID	599
mRNA Refseq	NM_004050
Protein Refseq	NP_004041
MIM	601931

 Tel: 1-631-559-9269 1-516-512-3133

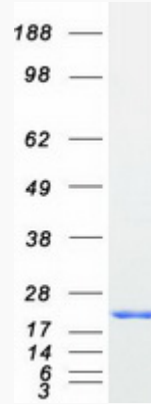
 Email: info@creative-biomart.com  Fax: 1-631-938-8127

 45-1 Ramsey Road, Shirley, NY 11967, USA

UniProt ID

Q92843

SDS-PAGE



 Tel: 1-631-559-9269 1-516-512-3133

 Email: info@creative-biomart.com  Fax: 1-631-938-8127

 45-1 Ramsey Road, Shirley, NY 11967, USA