

Recombinant Human BCL3 Protein, Myc/DDK-tagged, C13 and N15-labeled

Cat. No. BCL3-1724H **Lot. No.** (See product label)

SPECIFICATION

Product Overview	BCL3 MS Standard C13 and N15-labeled recombinant protein (NP_005169) with a C-terminal MYC/DDK tag, was expressed in HEK293 cells.
Species	Human
Source	HEK293
Description	This gene is a proto-oncogene candidate. It is identified by its translocation into the immunoglobulin alpha-locus in some cases of B-cell leukemia. The protein encoded by this gene contains seven ankyrin repeats, which are most closely related to those found in I kappa B proteins. This protein functions as a transcriptional co-activator that activates through its association with NF-kappa B homodimers. The expression of this gene can be induced by NF-kappa B, which forms a part of the autoregulatory loop that controls the nuclear residence of p50 NF-kappa B.
Molecular Mass	47.4 kDa
AA Sequence	MDEGPVDLRTRPKAAGLPGAALPLRKRPLRAPSPEPAAPRGAAGLVVPLDPLRGGC DLPAVPGPPHGLARPEALYYPGALLPLYPTRAMGSPFPLVNLPTPLYPM MCPMEHP LSADIAMATRADEDGDTPLHIAVVQGNLPAVHRLVNLFQQGGRELDIYNNLRQTPLH LAVITTLPSVVRLLVTAGASPMALDRHGQTA AHLACEHRSP TCLRALLDSAAPGTL DL EARNYDGLTALHVAVNTECQETVQLLLERGADIDAVIDIKSGRSPLIHAVENNSLSMV QLLLQHGANVNAQMYSGSSALHSASGRGLLPLVRTLVRS GADSS LKNCHNDTPLM

 Tel: 1-631-559-9269 1-516-512-3133

 Email: info@creative-biomart.com  Fax: 1-631-938-8127

 45-1 Ramsey Road, Shirley, NY 11967, USA

VARSRVIDILRGKATRPASTSQPDPSPDRSANTSPPESSRLSSNGLLSASPSSSPS
 QSPPRDPPGFPMAPPNFFLPSPSPPAFLPFAGVLRGPGRPVPPSPAPGGSTRTRPL
 EQKLISEEDLAANDILDYKDDDDKV

Purity > 80% as determined by SDS-PAGE and Coomassie blue staining

Stability Stable for 3 months from receipt of products under proper storage and handling conditions.

Storage Store at -80 centigrade. Avoid repeated freeze-thaw cycles.

Concentration 50 µg/mL as determined by BCA

Storage Buffer 100 mM glycine, 25 mM Tris-HCl, pH 7.3.

GENE INFORMATION

Gene Name [BCL3 B-cell CLL/lymphoma 3 \[Homo sapiens \(human\) \]](#)

Official Symbol [BCL3](#)

Synonyms BCL3; B-cell CLL/lymphoma 3; BCL4, D19S37; B-cell lymphoma 3 protein; B cell leukemia/lymphoma 3; B cell lymphoma 3 encoded protein; chronic lymphatic leukemia protein; BCL-3; proto-oncogene BCL3; B-cell leukemia/lymphoma 3; B-cell lymphoma 3-encoded protein; BCL4; D19S37;

Gene ID [602](#)

mRNA Refseq [NM_005178](#)

Protein Refseq [NP_005169](#)

 Tel: 1-631-559-9269 1-516-512-3133

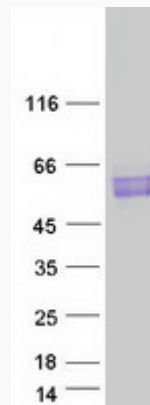
 Email: info@creative-biomart.com  Fax: 1-631-938-8127

 45-1 Ramsey Road, Shirley, NY 11967, USA

MIM 109560

UniProt ID P20749

SDS-PAGE



 Tel: 1-631-559-9269 1-516-512-3133

 Email: info@creative-biomart.com  Fax: 1-631-938-8127

 45-1 Ramsey Road, Shirley, NY 11967, USA