

# Recombinant Human BCL7A Protein, MYC/DDK-tagged, C13 and N15-labeled

**Cat. No.** BCL7A-051H    **Lot. No.** (See product label)

## SPECIFICATION

<b>Product Overview</b>	BCL7A MS Standard C13 and N15-labeled recombinant protein (NP_001019979) with a C-terminal MYC/DDK tag, was expressed in HEK293 cells.
<b>Species</b>	Human
<b>Source</b>	HEK293
<b>Description</b>	This gene is directly involved, with Myc and IgH, in a three-way gene translocation in a Burkitt lymphoma cell line. As a result of the gene translocation, the N-terminal region of the gene product is disrupted, which is thought to be related to the pathogenesis of a subset of high-grade B cell non-Hodgkin lymphoma. The N-terminal segment involved in the translocation includes the region that shares a strong sequence similarity with those of BCL7B and BCL7C. Two transcript variants encoding different isoforms have been found for this gene.
<b>Molecular Mass</b>	22.8 kDa
<b>AA Sequence</b>	MSGRSVRAETRSRAKDDIKRVMAAIEKVRKWEKKWVTVGDTSLRIYKWVPVTEPKV DDKNKNKKKGKDEKCGSEVTTPENSSSPGMMMDHDDNSNQSSIADASPIKQENSS NSSPAPEPNSAVPSDGTEAKVDEAQADGKEHPGAEDASDEQNSQSSMEHSMNSS EKVDRQPSGDSGLAAETSAISQDLEGVPPSKMKLEASQQNSEEMTRTRPLEQKLI SEEDLAANDILDYKDDDDKV
<b>Purity</b>	> 80% as determined by SDS-PAGE and Coomassie blue staining

 Tel: 1-631-559-9269    1-516-512-3133

 Email: [info@creative-biomart.com](mailto:info@creative-biomart.com)     Fax: 1-631-938-8127

 45-1 Ramsey Road, Shirley, NY 11967, USA

<b>Stability</b>	Stable for 3 months from receipt of products under proper storage and handling conditions.
<b>Storage</b>	Store at -80 centigrade. Avoid repeated freeze-thaw cycles.
<b>Concentration</b>	50 µg/mL as determined by BCA
<b>Storage Buffer</b>	100 mM glycine, 25 mM Tris-HCl, pH 7.3.

## GENE INFORMATION

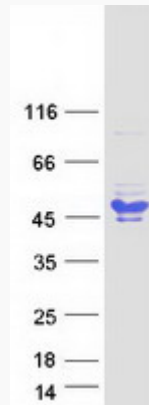
<b>Gene Name</b>	BCL7A BAF chromatin remodeling complex subunit BCL7A [ Homo sapiens (human) ]
<b>Official Symbol</b>	BCL7A
<b>Synonyms</b>	BCL7A; BAF chromatin remodeling complex subunit BCL7A; BCL7; B-cell CLL/lymphoma 7 protein family member A; B-cell CLL/lymphoma 7A; B-cell CLL/lymphoma-7; BCL tumor suppressor 7A; BCL7A, BAF complex component
<b>Gene ID</b>	605
<b>mRNA Refseq</b>	NM_001024808
<b>Protein Refseq</b>	NP_001019979
<b>MIM</b>	601406
<b>UniProt ID</b>	Q4VC05

 Tel: 1-631-559-9269 1-516-512-3133

 Email: [info@creative-biomart.com](mailto:info@creative-biomart.com)  Fax: 1-631-938-8127

 45-1 Ramsey Road, Shirley, NY 11967, USA

**SDS-PAGE**



 Tel: 1-631-559-9269 1-516-512-3133

 Email: [info@creative-biomart.com](mailto:info@creative-biomart.com)  Fax: 1-631-938-8127

 45-1 Ramsey Road, Shirley, NY 11967, USA