

Recombinant Human BCL7A protein, His&Myc-tagged

Cat. No. BCL7A-5634H Lot. No. (See product label)

SPECIFICATION

Product Overview	Recombinant Human BCL7A protein(Q4VC05)(1-210aa), fused with N-terminal His tag and C-terminal Myc tag, was expressed in E.coli.
Species	Human
Source	E.coli
ProteinLength	1-210a.a.
Tag	His&Myc
Form	If the delivery form is liquid, the default storage buffer is Tris/PBS-based buffer, 5%-50% glycerol. If the delivery form is lyophilized powder, the buffer before lyophilization is Tris/PBS-based buffer, 6% Trehalose, pH 8.0.
Molecular Mass	30.3 kDa
Purity	Greater than 85% as determined by SDS-PAGE.
Storage	Store at -20°C/-80°C upon receipt, aliquoting is necessary for mutiple use. Avoid repeated freeze-thaw cycles.
Reconstitution	We recommend that this vial be briefly centrifuged prior to opening to bring the contents to the bottom. Please reconstitute protein in deionized sterile water to a concentration of 0.1-1.0 mg/mL.We recommend to add 5-50% of glycerol (final

 Tel: 1-631-559-9269 1-516-512-3133

 Email: info@creative-biomart.com  Fax: 1-631-938-8127

 45-1 Ramsey Road, Shirley, NY 11967, USA

concentration) and aliquot for long-term storage at -20°C/-80°C.

AA Sequence

MSGRSVRAETRSRAKDDIKRVMAAIEKVRKWEKKWVTVGDTSLRIYKWVPVTEPKV
 DDKNKNKKKKGKDEKCGSEVTTTPENSSSSPGMMDMHDDNSNQSSIADASPIKQENSS
 NSSPAPEPNSAVPSDGTEAKVDEAQADGKEHPGAEDASDEQNSQSSMEHSMNSS
 EKVD RQPSGDSGLAAETSAISQDLEGVPPSKKMKLEASQQNSEEM

GENE INFORMATION

Gene Name [BCL7A B-cell CLL/lymphoma 7A \[Homo sapiens \]](#)

Official Symbol [BCL7A](#)

Synonyms BCL7A; B-cell CLL/lymphoma 7A; BCL7; B-cell CLL/lymphoma 7 protein family member A; B-cell CLL/lymphoma-7;

Gene ID [605](#)

mRNA Refseq [NM_001024808](#)

Protein Refseq [NP_001019979](#)

MIM [601406](#)

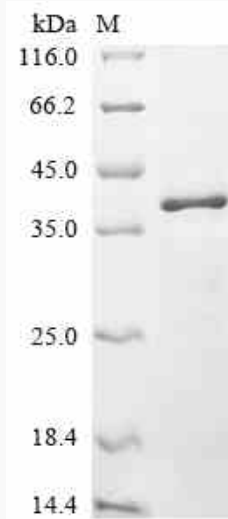
UniProt ID [Q4VC05](#)

 Tel: 1-631-559-9269 1-516-512-3133

 Email: info@creative-biomart.com  Fax: 1-631-938-8127

 45-1 Ramsey Road, Shirley, NY 11967, USA

SDS-PAGE



 Tel: 1-631-559-9269 1-516-512-3133

 Email: info@creative-biomart.com  Fax: 1-631-938-8127

 45-1 Ramsey Road, Shirley, NY 11967, USA