

Recombinant Human BCL7A protein, His-tagged

Cat. No. BCL7A-6433H Lot. No. (See product label)

SPECIFICATION

| | |
|-------------------------|---|
| Product Overview | Recombinant Human BCL7A protein(Q4VC05)(1-210aa), fused with C-terminal His tag, was expressed in Yeast. |
| Species | Human |
| Source | Yeast |
| ProteinLength | 1-210aa |
| Tag | C-His |
| Form | If the delivery form is liquid, the default storage buffer is Tris/PBS-based buffer, 5%-50% glycerol. If the delivery form is lyophilized powder, the buffer before lyophilization is Tris/PBS-based buffer, 6% Trehalose, pH 8.0. |
| Molecular Mass | 24.3 kDa |
| Purity | Greater than 90% as determined by SDS-PAGE. |
| Storage | Store at -20°C/-80°C upon receipt, aliquoting is necessary for mutiple use. Avoid repeated freeze-thaw cycles. |
| Reconstitution | We recommend that this vial be briefly centrifuged prior to opening to bring the contents to the bottom. Please reconstitute protein in deionized sterile water to a concentration of 0.1-1.0 mg/mL. We recommend to add 5-50% of glycerol (final |

 Tel: 1-631-559-9269 1-516-512-3133

 Email: info@creative-biomart.com  Fax: 1-631-938-8127

 45-1 Ramsey Road, Shirley, NY 11967, USA

concentration) and aliquot for long-term storage at -20°C/-80°C.

AA Sequence

MSGRSVRAETRSRAKDDIKRVMAAIEKVRKWEKKWVTVGDTSLRIYKWVPVTEPKV
 DDKNKNKKKKGKDEKCGSEVTTTPENSSSSPGMMDMHDDNSNQSSIADASPIKQENSS
 NSSPAPEPNSAVPSDGTEAKVDEAQADGKEHPGAEDASDEQNSQSSMEHSMNSS
 EKVD RQPSGDSGLAAETSAISQDLEGVPPSKKMKLEASQQNSEEM

GENE INFORMATION

Gene Name [BCL7A B-cell CLL/lymphoma 7A \[Homo sapiens \]](#)

Official Symbol [BCL7A](#)

Synonyms BCL7A; B-cell CLL/lymphoma 7A; BCL7; B-cell CLL/lymphoma 7 protein family member A; B-cell CLL/lymphoma-7;

Gene ID [605](#)

mRNA Refseq [NM_001024808](#)

Protein Refseq [NP_001019979](#)

MIM [601406](#)

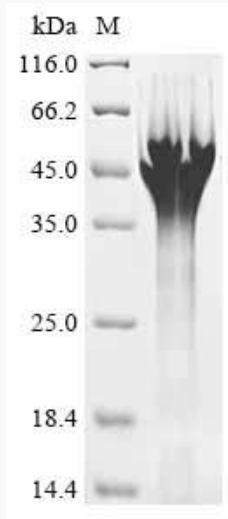
UniProt ID [Q4VC05](#)

 Tel: 1-631-559-9269 1-516-512-3133

 Email: info@creative-biomart.com  Fax: 1-631-938-8127

 45-1 Ramsey Road, Shirley, NY 11967, USA

SDS-PAGE



 Tel: 1-631-559-9269 1-516-512-3133

 Email: info@creative-biomart.com  Fax: 1-631-938-8127

 45-1 Ramsey Road, Shirley, NY 11967, USA