

Recombinant Human BCL7B Protein, GST-tagged

Cat. No. BCL7B-164H Lot. No. (See product label)

SPECIFICATION

Product Overview	Human BCL7B full-length ORF (NP_001698.2, 1 a.a. - 202 a.a.) recombinant protein with GST-tag at N-terminal.
Species	Human
Source	Wheat Germ
Description	The protein encoded by this gene contains a region that is highly similar to the N-terminal segment of BCL7A protein. The BCL7A protein is encoded by the gene known to be directly involved in a three-way gene translocation in a Burkitt lymphoma cell line. This gene is located at a chromosomal region commonly deleted in Williams syndrome. The function of this gene has not yet been determined. [provided by RefSeq]
Form	50 mM Tris-HCl, 10 mM reduced Glutathione, pH=8.0 in the elution buffer.
Molecular Mass	48.6 kDa
AA Sequence	MSGRSVRAETRSRAKDDIKKVMAAIEKVRKWEKKWVTVGDTSLRIFKWVPVTD SKEKEKSKSNSSAAREPNGFPSDASANSSLLLEFQDENSQSSVSDVYQLKVDSS TSSPSPQQSESLSPAHTSDFRTDDSQPPTLGQEILEEPSLPSSEVADEPPTLT KEEPVPLETQVVVEEEDSGAPPLKRFCVDQPTVPQTASES
Notes	Best use within three months from the date of receipt of this protein.

 Tel: 1-631-559-9269 1-516-512-3133

 Email: info@creative-biomart.com  Fax: 1-631-938-8127

 45-1 Ramsey Road, Shirley, NY 11967, USA

Storage Store at -80 centigrade. Aliquot to avoid repeated freezing and thawing.

Storage Buffer 50 mM Tris-HCl, 10 mM reduced Glutathione, pH=8.0 in the elution buffer.

GENE INFORMATION

Gene Name BCL7B B-cell CLL/lymphoma 7B [Homo sapiens]

Official Symbol BCL7B

Synonyms BCL7B; B-cell CLL/lymphoma 7B; B-cell CLL/lymphoma 7 protein family member B;

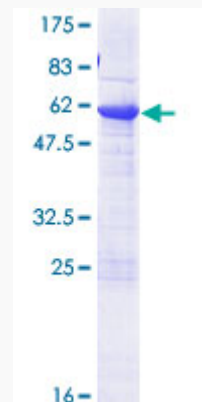
Gene ID 9275

mRNA Refseq NM_001197244

Protein Refseq NP_001184173


MIM 605846

UniProt ID Q9BQE9



 Tel: 1-631-559-9269 1-516-512-3133

 Email: info@creative-biomart.com  Fax: 1-631-938-8127

 45-1 Ramsey Road, Shirley, NY 11967, USA