

Recombinant Human BCL9L Protein, GST-tagged

Cat. No. BCL9L-169H Lot. No. (See product label)

SPECIFICATION

Product Overview	Human BCL9L partial ORF (NP_872363, 606 a.a. - 715 a.a.) recombinant protein with GST-tag at N-terminal.
Species	Human
Source	Wheat Germ
Form	50 mM Tris-HCl, 10 mM reduced Glutathione, pH=8.0 in the elution buffer.
Molecular Mass	37.84 kDa
AA Sequence	NQIQRVPGFGGMQSMPEVPMNAMQRPVRPGMGWTEDLPPMGGPSNFAQNTMP YPGGQGEAERFMTPRVRELLRHQLLEKRSMGMQRPLGMAGSGMGQSMEMERM MQAH
Notes	Best use within three months from the date of receipt of this protein.
Storage	Store at -80 centigrade. Aliquot to avoid repeated freezing and thawing.
Storage Buffer	50 mM Tris-HCl, 10 mM reduced Glutathione, pH=8.0 in the elution buffer.

GENE INFORMATION

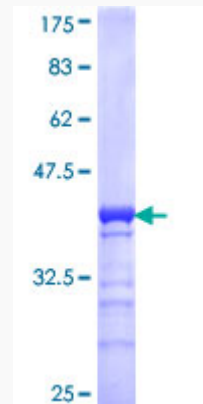
Gene Name	BCL9L B-cell CLL/lymphoma 9-like [Homo sapiens]
------------------	---

 Tel: 1-631-559-9269 1-516-512-3133

 Email: info@creative-biomart.com  Fax: 1-631-938-8127

 45-1 Ramsey Road, Shirley, NY 11967, USA

Official Symbol	BCL9L
Synonyms	BCL9L; B-cell CLL/lymphoma 9-like; B-cell CLL/lymphoma 9-like protein; DLNB11; protein BCL9-2; BCL9-like protein; B-cell lymphoma 9-like protein; nuclear co-factor of beta-catenin signalling; BCL9-2;
Gene ID	283149
mRNA Refseq	NM_182557
Protein Refseq	NP_872363
MIM	609004
UniProt ID	Q86UU0



 Tel: 1-631-559-9269 1-516-512-3133

 Email: info@creative-biomart.com  Fax: 1-631-938-8127

 45-1 Ramsey Road, Shirley, NY 11967, USA