

# Recombinant Human BCR Protein (Lys174-Asp331), N-His-tagged

Cat. No. BCR-0219H Lot. No. (See product label)

## SPECIFICATION

<b>Product Overview</b>	Recombinant human BCR (Lys174-Asp331) was fused with the N-His tag and was expressed in E. coli.
<b>Species</b>	Human
<b>Source</b>	E.coli
<b>ProteinLength</b>	Lys174-Asp331
<b>Form</b>	Lyophilized powder/frozen liquid
<b>Molecular Mass</b>	19.93 kDa
<b>Purity</b>	>90% as determined by SDS-PAGE
<b>Notes</b>	For research use only.
<b>Storage</b>	Use a manual defrost freezer and avoid repeated freeze thaw cycles. Store at 2 to 8 centigrade for one week. Store at -20 to -80 centigrade for twelve months from the date of receipt.
<b>Storage Buffer</b>	0.01M PBS, pH 7.4, 0.02% NLS
<b>Reconstitution</b>	Reconstitute in sterile water for a stock solution.

 Tel: 1-631-559-9269 1-516-512-3133

 Email: [info@creative-biomart.com](mailto:info@creative-biomart.com)  Fax: 1-631-938-8127

 45-1 Ramsey Road, Shirley, NY 11967, USA

**Shipping** They are shipped out with dry ice/blue ice unless customers require otherwise.

## GENE INFORMATION

**Gene Name** BCR breakpoint cluster region [ Homo sapiens (human) ]

**Official Symbol** BCR

**Synonyms** BCR; breakpoint cluster region; BCR1, D22S11; breakpoint cluster region protein; ALL; CML; D22S662; PHL; renal carcinoma antigen NY-REN-26; BCR1; D22S11; FLJ16453;

**Gene ID** 613

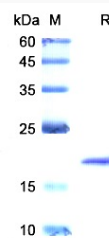
**mRNA Refseq** NM\_004327

**Protein Refseq** NP\_004318

**MIM** 151410

**UniProt ID** P11274

## SDS-PAGE



Tel: 1-631-559-9269 1-516-512-3133

Email: [info@creative-biomart.com](mailto:info@creative-biomart.com) Fax: 1-631-938-8127

45-1 Ramsey Road, Shirley, NY 11967, USA