

Recombinant Human BCR protein, His-tagged

Cat. No. BCR-3336H **Lot. No.** (See product label)

SPECIFICATION

Product Overview	Recombinant Human BCR protein(286-494 aa), fused with N-terminal His tag, was expressed in E.coli.
Species	Human
Source	E.coli
ProteinLength	286-494 aa
Form	The purified protein was Lyophilized from sterile PBS (58mM Na ₂ HPO ₄ , 17mM NaH ₂ PO ₄ , 68mM NaCl, pH7.4). 5 % trehalose and 5 % mannitol are added as protectant before lyophilization. The elution buffer contain 300mM imidazole.
AASequence	GMMEGEGKGPLLRSQSTSEQEKRLTWPRRSYSPRSFEDCGGGYTPDCSSNENLT SSEEDFSSGQSSRVSPSPPTTYRMFRDKSRSPSQNSQQSFDSSSPPTPQCHKRHRH CPVVVSEATIVGVRKTGQIWPNDGEGAFHGDADGSFGTTPPGYGCAADRAEEQRRH QDGLPYIDDSPSSSPHLSSKGRGSRDALVSGALESTKASELDLEK
Purity	85%, by SDS-PAGE with Coomassie Brilliant Blue staining.
Storage	Store at 2-8°C for 1-2 weeks. Aliquot and store at -20°C to -80°C for up to 3 months, reconstitution with sterile water and addition of an equal volume of glycerol. Avoid repeat freeze-thaw cycles.
Reconstitution	Dissolve the product in 200 µl sterile water to achieve a working concentration of 0.25

 Tel: 1-631-559-9269 1-516-512-3133

 Email: info@creative-biomart.com  Fax: 1-631-938-8127

 45-1 Ramsey Road, Shirley, NY 11967, USA

g/μl. If experimental compatibility allows, mix the aqueous solution with an equal volume of glycerol (1:1 ratio) after initial reconstitution.

GENE INFORMATION

Gene Name [BCR breakpoint cluster region \[Homo sapiens \]](#)

Official Symbol [BCR](#)

Synonyms [BCR](#); [breakpoint cluster region](#); [BCR1](#), [D22S11](#); [breakpoint cluster region protein](#); [ALL](#); [CML](#); [D22S662](#); [PHL](#); [renal carcinoma antigen NY-REN-26](#); [BCR1](#); [D22S11](#); [FLJ16453](#);

Gene ID [613](#)

mRNA Refseq [NM_004327](#)

Protein Refseq [NP_004318](#)

MIM [151410](#)

UniProt ID [P11274](#)

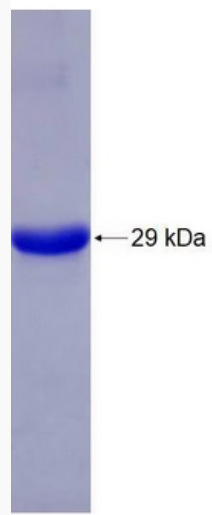
 Tel: 1-631-559-9269 1-516-512-3133

 Email: info@creative-biomart.com  Fax: 1-631-938-8127

 45-1 Ramsey Road, Shirley, NY 11967, USA



SDS-PAGE



Tel: 1-631-559-9269 1-516-512-3133

Email: info@creative-biomart.com Fax: 1-631-938-8127

45-1 Ramsey Road, Shirley, NY 11967, USA