

Recombinant Human BCR Protein, Myc/DDK-tagged, C13 and N15-labeled

Cat. No. BCR-4862H **Lot. No.** (See product label)

SPECIFICATION

Product Overview	BCR MS Standard C13 and N15-labeled recombinant protein (NP_067585) with a C-terminal MYC/DDK tag, was expressed in HEK293 cells.
Species	Human
Source	HEK293
Description	<p>A reciprocal translocation between chromosomes 22 and 9 produces the Philadelphia chromosome, which is often found in patients with chronic myelogenous leukemia. The chromosome 22 breakpoint for this translocation is located within the BCR gene. The translocation produces a fusion protein which is encoded by sequence from both BCR and ABL, the gene at the chromosome 9 breakpoint. Although the BCR-ABL fusion protein has been extensively studied, the function of the normal BCR gene product is not clear. The unregulated tyrosine kinase activity of BCR-ABL1 contributes to the immortality of leukaemic cells. The BCR protein has serine/threonine kinase activity and is a GTPase-activating protein for p21rac and other kinases. Two transcript variants encoding different isoforms have been found for this gene.</p>
Molecular Mass	137.5 kDa
AA Sequence	MVDPVGF AEAWKAQFPDSEPPRMELRSVGDIEQELERCKASIRRLEQEVNQERFR MIYLQTL LAKEKKS YDRQRWGFRR AAQAPDGASEPRASASRPQPAPADGADPPPA

 Tel: 1-631-559-9269 1-516-512-3133

 Email: info@creative-biomart.com  Fax: 1-631-938-8127

 45-1 Ramsey Road, Shirley, NY 11967, USA

EEPEARPDGEGSPGKARPGTARRPGAAASGERDDRGPPASVAALRSNFERIRKGH
 GQPGADAIEKPFYVNVFHHHERGLVKVNDKEVSDRISLGSQAMQMERKKSQHGAG
 SSVGDASRPPYRGRSSESSCGVDGDYEDAELNPRFLKDNLIDANGGSRPPWPPLE
 YQPYQSIYVGGMMEGEGKGPLLRQSSTSEQEKRLTWPRRSYSPRSFEDCGGGYT
 PDCSSNENLTSSEEDFSSGQSSRVSPSPTTYRMFRDKSRSPSQNSQQSFDSSSP
 TPQCHKRHRHCPVVVSEATIVGVRKTGQIWPNDGEGAFHGDADGSGFGTPPGYGCA
 ADRAEEQRRHQDGLPYIDDSPSSSPHLSSKGRGSRDALVSGALESTKASELDLEKG
 LEMRKWVLSGILASEETYLSHLEALLLPMKPLKAAATTSQPVLTSQQIETIFFKVPELY
 EIHKEFYDGLFPRVQQWSHQQRVGDLFQKLASQLGVYRAFVDNYGVAMEMAIEKCC
 QANAQFAEISENLRARSNKDAKDPTTKNSLETLLYKPVDRVTRSTLVLHDLLKHTPAS
 HPDHPLLQDALRISQNFLSSINEEITPRRQSMTVKKGEHRQLLKDSFMVELVEGARK
 LRHVFLFTDLLLCTKLKKQSGGKTQQYDCKWYIPLTDLSFQMVDELEAVNIPLVPD
 EELDALKIKISQIKNDIQREKRANKGSKATERLKKKLSEQESLLLLMSPSMAFRVHSR
 NGKSYTFLISSDYERAERENIREQQKKCFRSFSLTSVELQMLTNSCVKLQTVHSIP
 LTINKEDDESPGLYGFLNVIVHSATGFKQSSNLYCTLEVDSFGYFVNKAKTRVYRDT
 AEPNWNELDPQALQDRDWQRTVIAMNGIEVKLSVKFNSREFSLKRMPSRKQTGVF
 GVKIAVVTKRERSKVPYIVRQCVEEIERGMEEVGIYRVSGVATDIQALKAADFVNNK
 DVSVMMSMDVNAIAGTLKLYFRELPEPLFTDEFYPNFAEGIALSDPVAKESCMLNL
 LLSLPEANLLTFLFLLDHLKRVAEKEAVNKMSLHNLATVFGPTLLRPSEKESKLPANP
 SQPITMTDSWSLEVMSQVQVLLYFLQLEAIPAPDSKRQSILFSTEVTRTRPLEQKLIS
 EEDLAANDILDYKDDDDKV

Purity > 80% as determined by SDS-PAGE and Coomassie blue staining

Stability Stable for 3 months from receipt of products under proper storage and handling conditions.

Storage Store at -80 centigrade. Avoid repeated freeze-thaw cycles.

Concentration 50 µg/mL as determined by BCA

 Tel: 1-631-559-9269 1-516-512-3133

 Email: info@creative-biomart.com  Fax: 1-631-938-8127

 45-1 Ramsey Road, Shirley, NY 11967, USA

Storage Buffer 100 mM glycine, 25 mM Tris-HCl, pH 7.3.

GENE INFORMATION

Gene Name BCR breakpoint cluster region [Homo sapiens (human)]

Official Symbol BCR

Synonyms BCR; breakpoint cluster region; BCR1, D22S11; breakpoint cluster region protein; ALL; CML; D22S662; PHL; renal carcinoma antigen NY-REN-26; BCR1; D22S11; FLJ16453;

Gene ID 613

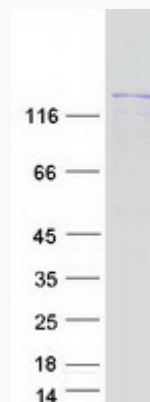
mRNA Refseq NM_021574

Protein Refseq NP_067585

MIM 151410

UniProt ID P11274

SDS-PAGE



 Tel: 1-631-559-9269 1-516-512-3133

 Email: info@creative-biomart.com  Fax: 1-631-938-8127

 45-1 Ramsey Road, Shirley, NY 11967, USA