

Recombinant Cattle BDNF Protein, His-tagged

Cat. No. BDNF-311C Lot. No. (See product label)

SPECIFICATION

Product Overview	Recombinant Cattle BDNF Protein (Pro20-Arg250) with N-His tag was expressed in E. coli.
Species	Cattle
Source	E.coli
ProteinLength	Pro20-Arg250
Description	Important signaling molecule that activates signaling cascades downstream of NTRK2.
Form	Freeze-dried powder
Molecular Mass	Predicted Molecular Mass: 27.3 kDa Accurate Molecular Mass: 32 kDa
Purity	> 95%
Applications	Positive Control; Immunogen; SDS-PAGE; WB.
Stability	The thermal stability is described by the loss rate. The loss rate was determined by accelerated thermal degradation test, that is, incubate the protein at 37 centigrade for 48h, and no obvious degradation and precipitation were observed. The loss rate is less than 5% within the expiration date under appropriate storage condition.

 Tel: 1-631-559-9269 1-516-512-3133

 Email: info@creative-biomart.com  Fax: 1-631-938-8127

 45-1 Ramsey Road, Shirley, NY 11967, USA

Storage	Avoid repeated freeze/thaw cycles. Store at 2-8 centigrade for one month. Aliquot and store at -80 centigrade for 12 months.
----------------	--

Storage Buffer	20mM Tris, 150mM NaCl, pH8.0, containing 1mM EDTA, 1mM DTT, 0.01% SKL, 5% Trehalose and Proclin300.
-----------------------	---

Reconstitution	Reconstitute in sterile water to a concentration of 0.1-1.0 mg/mL. Do not vortex.
-----------------------	---

GENE INFORMATION

Gene Name	BDNF brain derived neurotrophic factor [Bos taurus (cattle)]
------------------	--

Official Symbol	BDNF
------------------------	------

Synonyms	BDNF; brain derived neurotrophic factor; brain-derived neurotrophic factor
-----------------	--

Gene ID	617701
----------------	--------

mRNA Refseq	NM_001046607
--------------------	--------------

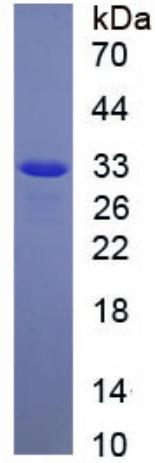
Protein Refseq	NP_001040072
-----------------------	--------------

UniProt ID	Q95106
-------------------	--------

 Tel: 1-631-559-9269 1-516-512-3133

 Email: info@creative-biomart.com  Fax: 1-631-938-8127

 45-1 Ramsey Road, Shirley, NY 11967, USA



Tel: 1-631-559-9269 1-516-512-3133

Email: info@creative-biomart.com Fax: 1-631-938-8127

45-1 Ramsey Road, Shirley, NY 11967, USA