

## Recombinant Rabbit BDNF protein, His-tagged

Cat. No. BDNF-553R    Lot. No. (See product label)

### SPECIFICATION

**Product Overview**      Recombinant Rabbit BDNF aa. (Met16~Gly183) fused with N-terminal His tag was produced in E. coli cells.

**Species**                      Rabbit

**Source**                        E.coli

**ProteinLength**              Met16~Gly183

**Form**                          Freeze-dried powder

**Molecular Mass**            Predicted Molecular Mass: 20.0kDa

**Endotoxin**                    <1.0EU per 1g (determined by the LAL method)

**Purity**                         > 95%

**Characteristic**              The isoelectric point is 6.

**Applications**                SDS-PAGE; WB; ELISA; IP.

**Stability**                      The thermal stability is described by the loss rate. The loss rate was determined by accelerated thermal degradation test, that is, incubate the protein at 37°C for 48h, and no obvious degradation and precipitation were observed. The loss rate is less than 5% within the expiration date under appropriate storage condition.

 Tel: 1-631-559-9269    1-516-512-3133

 Email: [info@creative-biomart.com](mailto:info@creative-biomart.com)     Fax: 1-631-938-8127

 45-1 Ramsey Road, Shirley, NY 11967, USA

<b>Storage</b>	Avoid repeated freeze/thaw cycles. Store at 2-8°C for one month. Aliquot and store at -80°C for 12 months.
----------------	--

<b>Storage buffer</b>	20mM Tris, 150mM NaCl, pH8.0, containing 1mM EDTA, 1mM DTT, 0.01% sarcosyl, 5% trehalose, and preservative.
-----------------------	---

<b>Reconstitution</b>	Reconstitute in sterile ddH <sub>2</sub> O.
-----------------------	---

## GENE INFORMATION

<b>Gene Name</b>	BDNF brain derived neurotrophic factor [ <i>Oryctolagus cuniculus</i> (rabbit) ]
------------------	--

<b>Official Symbol</b>	BDNF
------------------------	------

<b>Synonyms</b>	BDNF; brain derived neurotrophic factor; LOW QUALITY PROTEIN: brain-derived neurotrophic factor
-----------------	---

<b>Gene ID</b>	100356949
----------------	-----------

<b>mRNA Refseq</b>	XM_017345633.1
--------------------	----------------

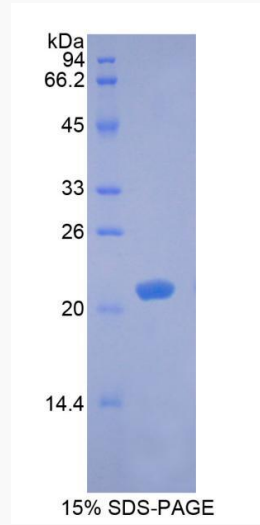
<b>Protein Refseq</b>	XP_017201122.1
-----------------------	----------------

 Tel: 1-631-559-9269 1-516-512-3133

 Email: [info@creative-biomart.com](mailto:info@creative-biomart.com)  Fax: 1-631-938-8127

 45-1 Ramsey Road, Shirley, NY 11967, USA

**SDS-PAGE**



 Tel: 1-631-559-9269 1-516-512-3133

 Email: [info@creative-biomart.com](mailto:info@creative-biomart.com)  Fax: 1-631-938-8127

 45-1 Ramsey Road, Shirley, NY 11967, USA