

Recombinant Human BEND3 Protein (328-461 aa), GST-tagged

Cat. No. BEND3-1036H Lot. No. (See product label)

SPECIFICATION

Product Overview	Recombinant Human BEND3 Protein (328-461 aa) is produced by E. coli expression system. This protein is fused with a GST tag at the N-terminal. Research Area: Cardiovascular. Protein Description: Partial.
Species	Human
Source	E.coli
ProteinLength	328-461 aa
Form	Tris-based buffer, 50% glycerol
Molecular Mass	42.5 kDa
AA Sequence	CLPQLNDFFSRFWAQREMEDSQPSGQVASFFAEQVDPGHFLDNKDQEEALSLDR SSTIASDHVVDTQDLTEFLDEASSPGFAVFLHRLFPELFDHRKLGEQYSCYGDGG KQELDPQRLQIIRNYTEIYFPD
Purity	> 90% as determined by SDS-PAGE.
Notes	Repeated freezing and thawing is not recommended. Store working aliquots at 4 centigrade for up to one week.
Storage	The shelf life is related to many factors, storage state, buffer ingredients, storage temperature and the stability of the protein itself. Generally, the shelf life of liquid form

 Tel: 1-631-559-9269 1-516-512-3133

 Email: info@creative-biomart.com  Fax: 1-631-938-8127

 45-1 Ramsey Road, Shirley, NY 11967, USA

is 6 months at -20 centigrade/-80 centigrade. The shelf life of lyophilized form is 12 months at -20 centigrade/-80 centigrade.

Concentration A hardcopy of COA with concentration instruction is sent along with the products.

GENE INFORMATION

Gene Name BEND3 BEN domain containing 3 [Homo sapiens]

Official Symbol BEND3

Synonyms KIAA1553; RP11-59I9.2;

Gene ID 57673

mRNA Refseq NM_001080450.2

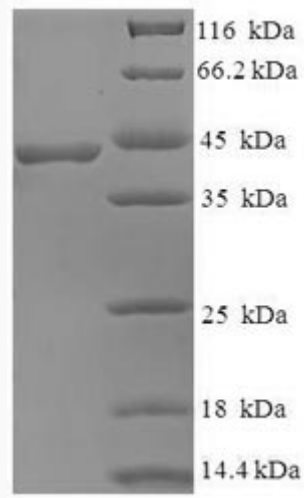
Protein Refseq NP_001073919.1

UniProt ID Q5T5X7

 Tel: 1-631-559-9269 1-516-512-3133

 Email: info@creative-biomart.com  Fax: 1-631-938-8127

 45-1 Ramsey Road, Shirley, NY 11967, USA



(Tris-Glycine gel) Discontinuous SDS-PAGE (reduced) with 5% enrichment gel and 15% separation gel.

Tel: 1-631-559-9269 1-516-512-3133

Email: info@creative-biomart.com Fax: 1-631-938-8127

45-1 Ramsey Road, Shirley, NY 11967, USA