

# Recombinant Full Length Human BEND3 Protein, C-Flag-tagged

Cat. No. BEND3-1528HFL Lot. No. (See product label)

## SPECIFICATION

<b>Product Overview</b>	Recombinant Full Length Human BEND3 Protein, fused to Flag-tag at C-terminus, was expressed in Mammalian cells.
<b>Species</b>	Human
<b>Source</b>	Mammalian Cells
<b>Description</b>	Enables rDNA binding activity. Involved in several processes, including histone modification; negative regulation of macromolecule metabolic process; and protein homooligomerization. Located in heterochromatin; nucleolus; and nucleoplasm.
<b>Form</b>	25 mM Tris HCl, pH 7.3, 100 mM glycine, 10% glycerol.
<b>Molecular Mass</b>	94.3 kDa
<b>AA Sequence</b>	<p>MNSTEFTEDVEEV LKSITVKVETEAE DAALDCSVNSRTSEKHSVDSVLTALQDSSKR            KQLVSDGLLD SVP GVKRRRLIPEALLAGMRNRENSSPCQGNGEQAGRGRSLGNV            WPGEEEP CNDATTPSYKKPLYGISHKIME KKNPPSGDLLNVYELFEKANASNSPSS            LRLLN EPQKRDCGSTGAGTDNDPNYFLIQKMFYMLNTLTSNM SQLHSKVDLLSLEV            SRIKKQVSPTE MVAKFQPPPEYQLTAAELKQIVDQSLSGGDLACRLLVQLFPELFS D            VDFSRGCSACGF AAKRKLES LHLQLIRNYVEVYPSVKDTAVWQAECLPQLNDFFS            RFWAQREMEDSQP SGQVASFFAEQVDPGHFLDNKDQEEALS LDRSSTIASDHVV            DTQDLTEFLDEASSPGEFAVFLHRLFP ELFDHRKLGEQYSCYGDGGKQELDPQRL            QIIRNYTEIYFPDMQEEEA WLQQCAQRINDELEGLGLDAGSE GDPPRDDCYDSSSL</p>

Tel: 1-631-559-9269 1-516-512-3133

Email: [info@creative-biomart.com](mailto:info@creative-biomart.com) Fax: 1-631-938-8127

45-1 Ramsey Road, Shirley, NY 11967, USA

PDDISVVKVEDSFEGERPGRRSKKIWLVPIDFDKLEIPQPDFEVPGADCLLSKEQL R  
 SIYESSLSIGNFASRLLVHLFPELFTHENLRKQYNCSGSLGKKQLDPSRIKLIRHYVQL  
 LYPRAKNDRV WTLEFVGKLDERCRRRDTEQRRSYQQQRKVHVPGPEDLDLTSYAI  
 NPERFREEFEGPPLPPERSSKDFCK IPLDELVVSPDFPVPSPYLLSDKEVREIVQQ  
 SLSVGNFAARLLVRLFPELFTAENLRLQYNHSGACNKK  
 QLDPTLRLIRHYVEAVYPVEKMEEVWHYECIPSIDERCRRPNRKKCDILKKAKKVE  
 KTRTRPLEQKLISEEDLAANDILDYKDDDDKV

<b>Purity</b>	> 80% as determined by SDS-PAGE and Coomassie blue staining.
<b>Stability</b>	Stable for 12 months from the date of receipt of the product under proper storage and handling conditions. Avoid repeated freeze-thaw cycles.
<b>Storage</b>	Store at -80 centigrade.
<b>Concentration</b>	>50 ug/mL as determined by microplate BCA method.
<b>Preparation</b>	Recombinant protein was captured through anti-DDK affinity column followed by conventional chromatography steps.
<b>Full Length</b>	Full L.

## GENE INFORMATION

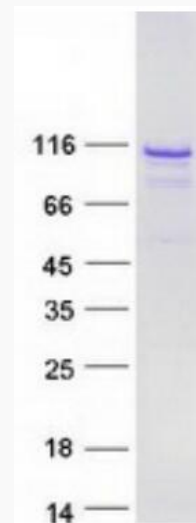
<b>Gene Name</b>	BEND3 BEN domain containing 3 [ Homo sapiens (human) ]
<b>Official Symbol</b>	BEND3
<b>Synonyms</b>	KIAA1553
<b>Gene ID</b>	57673

mRNA Refseq [NM\\_001080450.3](#)

Protein Refseq [NP\\_001073919.1](#)

MIM [616374](#)

UniProt ID [Q5T5X7](#)



Coomassie blue staining of purified BEND3 protein.

 Tel: 1-631-559-9269 1-516-512-3133

 Email: [info@creative-biomart.com](mailto:info@creative-biomart.com)  Fax: 1-631-938-8127

 45-1 Ramsey Road, Shirley, NY 11967, USA