

Recombinant Human BEND4 Protein, GST-Tagged

Cat. No. BEND4-0015H Lot. No. (See product label)

SPECIFICATION

Product Overview	Human CCDC4 full-length ORF (AAI46594.1, 1 a.a. - 416 a.a.) recombinant protein with GST-tag at N-terminal.
Species	Human
Source	Wheat Germ
Description	BEND4 (BEN Domain Containing 4) is a Protein Coding gene.
Molecular Mass	72.71 kDa
AA Sequence	<p>MQGAPRARFGSRTPPAAAASSSSPCTPATSQGHLRTPAQPPPASPAASSSSSFA AVVRYGPGAAAAAGTGGTGSDSASLELSAESRMILDFAAQCSRVLSELLNCGGKLL DSNHSQSMISCVKQEGSSYNERQEHCHIGKGVHSQTSNDVNIEMQYMQRKQQTSA FLRVFTDSLQNYLLSGSFPTPNPSSASEYGHLDVDPLSTSPVHTLGGWTSPATSES HGHPSSSTLPEEEEEEEDEEGYCPRCQELEQEVISLQQENEELRRKLESIPVPCQTVL DYLLKMLVQHHNQLLIPQPADQPTEGSKQLLNYPVYITSKQWDEAVNSSKKDGRRL LRYLIRFVFTTDELKYSCGLGKRKRSVQSGETGPERRPLDPVKVTCLRGTASFRSVS PSVISFHRIGCGSPRTSVQPSVF</p>
Applications	Enzyme-linked Immunoabsorbent Assay Western Blot (Recombinant protein) Antibody Production Protein Array

 Tel: 1-631-559-9269 1-516-512-3133

 Email: info@creative-biomart.com  Fax: 1-631-938-8127

 45-1 Ramsey Road, Shirley, NY 11967, USA

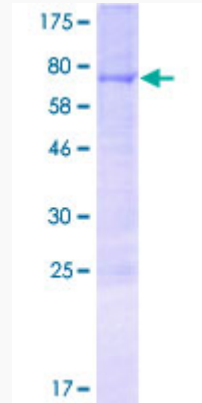
Notes	Best use within three months from the date of receipt of this protein.
Storage	Store at -80 centigrade. Aliquot to avoid repeated freezing and thawing.
Storage Buffer	50 mM Tris-HCl, 10 mM reduced Glutathione, pH=8.0 in the elution buffer.
GENE INFORMATION	
Gene Name	BEND4 BEN domain containing 4 [Homo sapiens]
Official Symbol	BEND4
Synonyms	BEND4; BEN domain containing 4; CCDC4, coiled coil domain containing 4; BEN domain-containing protein 4; FLJ35632; FLJ43965; coiled-coil domain containing 4; coiled-coil domain-containing protein 4; CCDC4; MGC157807; MGC157808;
Gene ID	389206
mRNA Refseq	NM_001159547
Protein Refseq	NP_001153019
UniProt ID	Q6ZU67

 Tel: 1-631-559-9269 1-516-512-3133

 Email: info@creative-biomart.com  Fax: 1-631-938-8127

 45-1 Ramsey Road, Shirley, NY 11967, USA

**Quality Control
Testing**



12.5% SDS-PAGE Stained with Coomassie Blue.

 Tel: 1-631-559-9269 1-516-512-3133

 Email: info@creative-biomart.com  Fax: 1-631-938-8127

 45-1 Ramsey Road, Shirley, NY 11967, USA