

# Recombinant Human BEND6 Protein, Myc/DDK-tagged, C13 and N15-labeled

Cat. No. BEND6-3920H Lot. No. (See product label)

## SPECIFICATION

<b>Product Overview</b>	BEND6 MS Standard C13 and N15-labeled recombinant protein (NP_689944) with a C-terminal MYC/DDK tag, was expressed in HEK293 cells.
<b>Species</b>	Human
<b>Source</b>	HEK293
<b>Description</b>	BEND6 (BEN Domain Containing 6) is a Protein Coding gene. Diseases associated with BEND6 include Carpenter Syndrome 1. Among its related pathways are Notch Signaling Pathway (WikiPathways). Gene Ontology (GO) annotations related to this gene include chromatin binding.
<b>Molecular Mass</b>	31 kDa
<b>AA Sequence</b>	<p>MQKIVQTDEITNTQAFRKGKRKRTETMDSANSDMDKGQRDPYSGNAFLPGESS            SEDEEPLAELSKEELCAKIKSLKEKLTNTRKENSRLRQSLVMLQVLPQAVTQFEELV            GMAEALLKGGGTMSTSASTLWRATNNSPDSFASTCSNSNSNSSSPVSLKPEEEH            QTDEKQFQIEKWQIARCNKSKPQKFINDLMQVLYTNEYMATHSLTGAKSSTSRDKA            VKPAMNQNEVQEIIIGVTKQLFPNTDDVSIRRMIGQKLNNCTKKPNLSKNLNSQDIKTR            TRPLEQKLISEEDLAANDILDYKDDDDKV</p>
<b>Purity</b>	> 80% as determined by SDS-PAGE and Coomassie blue staining
<b>Stability</b>	Stable for 3 months from receipt of products under proper storage and handling

 Tel: 1-631-559-9269 1-516-512-3133

 Email: [info@creative-biomart.com](mailto:info@creative-biomart.com)  Fax: 1-631-938-8127

 45-1 Ramsey Road, Shirley, NY 11967, USA

conditions.

**Storage** Store at -80 centigrade. Avoid repeated freeze-thaw cycles.

**Concentration** 50 µg/mL as determined by BCA

**Storage Buffer** 100 mM glycine, 25 mM Tris-HCl, pH 7.3.

## GENE INFORMATION

**Gene Name** BEND6 BEN domain containing 6 [ Homo sapiens (human) ]

**Official Symbol** BEND6

**Synonyms** BEND6; BEN domain containing 6; C6orf65, chromosome 6 open reading frame 65; BEN domain-containing protein 6; bA203B9.1; FLJ30162; C6orf65;

**Gene ID** 221336

**mRNA Refseq** NM\_152731

**Protein Refseq** NP\_689944

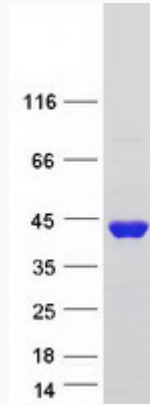
**UniProt ID** Q5SZJ8

 Tel: 1-631-559-9269 1-516-512-3133

 Email: [info@creative-biomart.com](mailto:info@creative-biomart.com)  Fax: 1-631-938-8127

 45-1 Ramsey Road, Shirley, NY 11967, USA

**SDS-PAGE**



 Tel: 1-631-559-9269 1-516-512-3133

 Email: [info@creative-biomart.com](mailto:info@creative-biomart.com)  Fax: 1-631-938-8127

 45-1 Ramsey Road, Shirley, NY 11967, USA