

Recombinant Human BEST3 Protein, Myc/DDK-tagged, C13 and N15-labeled

Cat. No. BEST3-3094H Lot. No. (See product label)

SPECIFICATION

Product Overview	BEST3 MS Standard C13 and N15-labeled recombinant protein (NP_689652) with a C-terminal MYC/DDK tag, was expressed in HEK293 cells.
Species	Human
Source	HEK293
Description	BEST3 belongs to the bestrophin family of anion channels, which includes BEST1, the gene mutant in vitelliform macular dystrophy, and 2 other BEST1-like genes, BEST2 and BEST4. Bestrophins are transmembrane (TM) proteins that share a homology region containing a high content of aromatic residues, including an invariant arg-phe-pro (RFP) motif. The bestrophin genes share a conserved gene structure, with almost identical sizes of the 8 RFP-TM domain-encoding exons and highly conserved exon-intron boundaries. Each of the 4 bestrophin genes has a unique 3-prime end of variable length.
Molecular Mass	50.8 kDa
AA Sequence	MTTDERKLFNHLKSPHLKYWVPFIWFGNLATKARNEGRIRDSVDLQSLMTEMNRYR SWCSLLFGYDWDGIPLVYTQVAEQLINPFGEDDDDFETNWCIDRNLQVSL LAVDEM HMSLPKMKKDIYWDDSAARPPYTLAAADYCIPSFLGSTVQMGLSGSDFPDEEWLW DYEKHGHRHSMIRRVKRFLSAHEHPSSPRRRSYRRQTSDSSMFLPRDDLSPARDLL DVPSRNPPRASPTWKKSCFPEGSPTLHFSGMELSTIRETSQTSTLQSLTPQSSVRT

 Tel: 1-631-559-9269 1-516-512-3133

 Email: info@creative-biomart.com  Fax: 1-631-938-8127

 45-1 Ramsey Road, Shirley, NY 11967, USA

SPIKMPLVPEVLITAAEAPVPTSGGYHHDSATSILSSEFTGVQPSKTEQQQGPMGSIL
 SPSEKETPPGGPSPQTVSASAEENIFNCEEDPGDTFLKRWSLPGFLGSSHTSLGNL
 SPDPMSSQPALLIDTETSSEISGINIVAGSRVSSDMLYLMENLDTKETDIIELNKETEE
 SPKTRTRPLEQKLISEEDLAANDILDYKDDDDKV

Purity > 80% as determined by SDS-PAGE and Coomassie blue staining

Stability Stable for 3 months from receipt of products under proper storage and handling conditions.

Storage Store at -80 centigrade. Avoid repeated freeze-thaw cycles.

Concentration 50 µg/mL as determined by BCA

Storage Buffer 100 mM glycine, 25 mM Tris-HCl, pH 7.3.

GENE INFORMATION

Gene Name BEST3 bestrophin 3 [Homo sapiens (human)]

Official Symbol BEST3

Synonyms BEST3; bestrophin 3; vitelliform macular dystrophy 2 like 3, VMD2L3; bestrophin-3; MGC13168; MGC40411; vitelliform macular dystrophy 2-like 3; vitelliform macular dystrophy 2-like protein 3; VMD2L3;

Gene ID 144453

mRNA Refseq NM_152439

Protein Refseq NP_689652

 Tel: 1-631-559-9269 1-516-512-3133

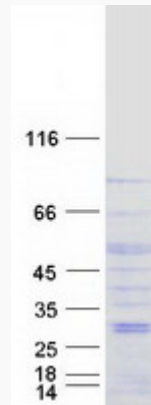
 Email: info@creative-biomart.com  Fax: 1-631-938-8127

 45-1 Ramsey Road, Shirley, NY 11967, USA

MIM 607337

UniProt ID Q8N1M1

SDS-PAGE



 Tel: 1-631-559-9269 1-516-512-3133

 Email: info@creative-biomart.com  Fax: 1-631-938-8127

 45-1 Ramsey Road, Shirley, NY 11967, USA