

# Recombinant Human BFSP1 Protein, Myc/DDK-tagged, C13 and N15-labeled

Cat. No. BFSP1-3209H Lot. No. (See product label)

## SPECIFICATION

<b>Product Overview</b>	BFSP1 MS Standard C13 and N15-labeled recombinant protein (NP_001186) with a C-terminal MYC/DDK tag, was expressed in HEK293 cells.
<b>Species</b>	Human
<b>Source</b>	HEK293
<b>Description</b>	<p>This gene encodes a lens-specific intermediate filament-like protein named filensin. The encoded protein is expressed in lens fiber cells after differentiation has begun. This protein functions as a component of the beaded filament which is a cytoskeletal structure found in lens fiber cells. Mutations in this gene are the cause of autosomal recessive cortical juvenile-onset cataract. Alternate splicing results in multiple transcript variants.</p>
<b>Molecular Mass</b>	74.4 kDa
<b>AA Sequence</b>	<pre> MYRRSYVFQTRKEQYEHAEASRAAEPPERPADEGWAGATSLAALQGLGERVAAHV QRARALEQRHAGLRRQLDAFQRLGELAGPEDALARQVESNRQRVRDLEAERARLE RQGTEAQRALDEFRRSKYENECECQLLLKEMLERLNKEADEALLHNLRLQLEAQFLQ DDISAAKDRHKKNLLEVQTYISILQQIIHTTTPPASIVTSGMREEKLLTEREVAALRSQLE EGREVLSHLQAQRVELQAQTTTLEQAIKSAHECYDDEIQLYNEQIETLRKEIEETERV LEKSSYDCRQLAVAQQLTKNELDRYHRIIEIEGNRLTSAFIETPIPLFTQSHGVSLSTG SGGKDLTRALQDITAAKPRQKALPKNVPRRKEIITKDKTNGALEDAPLKGLEDTKLVQ           </pre>

 Tel: 1-631-559-9269 1-516-512-3133

 Email: [info@creative-biomart.com](mailto:info@creative-biomart.com)  Fax: 1-631-938-8127

 45-1 Ramsey Road, Shirley, NY 11967, USA

VVLKEESESKEFESESKEVSPLTQEGAPEDVPDGGQISKGFGKLYRKVKEKVRSPKE  
 PETPTELYTKERHVLVTGDANYVDPRFYVSSITAKGGVAVSVAEDSVLYDGQVPEPSP  
 ESPKPPLENGQVGLQEKEGQPIDQQPIDKEIEPDGAELEGPEEKREGEERDEESR  
 RPCAMVTPGAEEPSIPEPPKPAADQDGAEVLGTRSRSLPEKGGPKALAYKTVEVVE  
 SIEKISTESIQTYEETAVIVETMIGKTKSDKKKSGEKSSTRTRPLEQKLISEEDLAANDI  
 LDYKDDDDKV

**Purity** > 80% as determined by SDS-PAGE and Coomassie blue staining

**Stability** Stable for 3 months from receipt of products under proper storage and handling conditions.

**Storage** Store at -80 centigrade. Avoid repeated freeze-thaw cycles.

**Concentration** 50 µg/mL as determined by BCA

**Storage Buffer** 100 mM glycine, 25 mM Tris-HCl, pH 7.3.

## GENE INFORMATION

**Gene Name** [BFSP1 beaded filament structural protein 1 \[ Homo sapiens \(human\) \]](#)

**Official Symbol** [BFSP1](#)

**Synonyms** BFSP1; beaded filament structural protein 1, filensin; filensin; CP94; CP115; LIFL H; cytoskeletal protein, 115 KD; lens intermediate filament-like heavy; lens fiber cell beaded-filament structural protein CP 115; LIFL-H;

**Gene ID** [631](#)

**mRNA Refseq** [NM\\_001195](#)

 Tel: 1-631-559-9269 1-516-512-3133

 Email: [info@creative-biomart.com](mailto:info@creative-biomart.com)  Fax: 1-631-938-8127

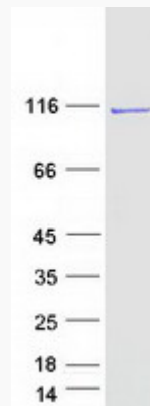
 45-1 Ramsey Road, Shirley, NY 11967, USA

**Protein Refseq** NP\_001186

**MIM** 603307

**UniProt ID** Q12934

**SDS-PAGE**



 Tel: 1-631-559-9269 1-516-512-3133

 Email: [info@creative-biomart.com](mailto:info@creative-biomart.com)  Fax: 1-631-938-8127

 45-1 Ramsey Road, Shirley, NY 11967, USA