

# Recombinant Human BGLAP Protein, MYC/DDK-tagged, C13 and N15-labeled

**Cat. No.** BGLAP-010H    **Lot. No.** (See product label)

## SPECIFICATION

<b>Product Overview</b>	BGLAP MS Standard C13 and N15-labeled recombinant protein (NP_954642) with a C-terminal MYC/DDK tag, was expressed in HEK293 cells.
<b>Species</b>	Human
<b>Source</b>	HEK293
<b>Description</b>	This gene encodes a highly abundant bone protein secreted by osteoblasts that regulates bone remodeling and energy metabolism. The encoded protein contains a Gla (gamma carboxyglutamate) domain, which functions in binding to calcium and hydroxyapatite, the mineral component of bone. Serum osteocalcin levels may be negatively correlated with metabolic syndrome. Read-through transcription exists between this gene and the neighboring upstream gene, PMF1 (polyamine-modulated factor 1), but the encoded protein only shows sequence identity with the upstream gene product.
<b>Molecular Mass</b>	8.7 kDa
<b>AA Sequence</b>	MRALTLALLALAALCIAGQAGAKPSGAESSKGAAFVSKQEGSEVVKRPRRYLYQW LGAPVPYPDPLEPRREVCELNPDCDELADHIGFQEAYRRFYGPVTRTRPLEQKLISE EDLAANDILDYKDDDDKV
<b>Purity</b>	> 80% as determined by SDS-PAGE and Coomassie blue staining

 Tel: 1-631-559-9269    1-516-512-3133

 Email: [info@creative-biomart.com](mailto:info@creative-biomart.com)     Fax: 1-631-938-8127

 45-1 Ramsey Road, Shirley, NY 11967, USA

<b>Stability</b>	Stable for 3 months from receipt of products under proper storage and handling conditions.
<b>Storage</b>	Store at -80 centigrade. Avoid repeated freeze-thaw cycles.
<b>Concentration</b>	50 µg/mL as determined by BCA
<b>Storage Buffer</b>	100 mM glycine, 25 mM Tris-HCl, pH 7.3.

## GENE INFORMATION

<b>Gene Name</b>	BGLAP bone gamma-carboxyglutamate protein [ Homo sapiens (human) ]
<b>Official Symbol</b>	BGLAP
<b>Synonyms</b>	BGLAP; bone gamma-carboxyglutamate protein; BGP; OC; OCN; osteocalcin; bone gamma-carboxyglutamate (gla) protein (osteocalcin); gamma-carboxyglutamic acid-containing protein
<b>Gene ID</b>	632
<b>mRNA Refseq</b>	NM_199173
<b>Protein Refseq</b>	NP_954642
<b>MIM</b>	112260
<b>UniProt ID</b>	P02818

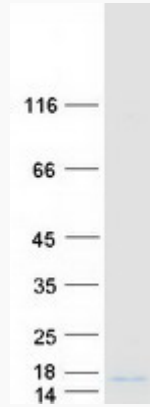
 Tel: 1-631-559-9269 1-516-512-3133

 Email: [info@creative-biomart.com](mailto:info@creative-biomart.com)  Fax: 1-631-938-8127

 45-1 Ramsey Road, Shirley, NY 11967, USA



**SDS-PAGE**



☎ Tel: 1-631-559-9269 1-516-512-3133

☎ Email: [info@creative-biomart.com](mailto:info@creative-biomart.com) ☎ Fax: 1-631-938-8127

☎ 45-1 Ramsey Road, Shirley, NY 11967, USA