

Recombinant Human BGLAP Protein, GST-tagged

Cat. No. BGLAP-205H Lot. No. (See product label)

SPECIFICATION

Product Overview	Human BGLAP partial ORF (NP_954642, 52 a.a. - 100 a.a.) recombinant protein with GST-tag at N-terminal.
Species	Human
Source	Wheat Germ
Form	50 mM Tris-HCl, 10 mM reduced Glutathione, pH=8.0 in the elution buffer.
Molecular Mass	31.13 kDa
AA Sequence	YLYQWLGAPVPYPDPLEPRREVCELNPDCDELADHIGFQEAYRRFYGPV
Notes	Best use within three months from the date of receipt of this protein.
Storage	Store at -80 centigrade. Aliquot to avoid repeated freezing and thawing.
Storage Buffer	50 mM Tris-HCl, 10 mM reduced Glutathione, pH=8.0 in the elution buffer.

GENE INFORMATION

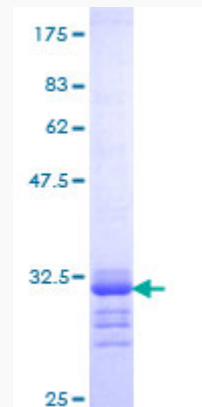
Gene Name	BGLAP bone gamma-carboxyglutamate (gla) protein [Homo sapiens]
Official Symbol	BGLAP

 Tel: 1-631-559-9269 1-516-512-3133

 Email: info@creative-biomart.com  Fax: 1-631-938-8127

 45-1 Ramsey Road, Shirley, NY 11967, USA

Synonyms	BGLAP; bone gamma-carboxyglutamate (gla) protein; osteocalcin; bone Gla protein; gamma-carboxyglutamic acid-containing protein; bone gamma-carboxyglutamate (gla) protein (osteocalcin); OC; BGP;
Gene ID	632
mRNA Refseq	NM_199173
Protein Refseq	NP_954642
MIM	112260
UniProt ID	P02818



 Tel: 1-631-559-9269 1-516-512-3133

 Email: info@creative-biomart.com  Fax: 1-631-938-8127

 45-1 Ramsey Road, Shirley, NY 11967, USA