

Recombinant Human BGLAP Protein, His-tagged

Cat. No. BGLAP-2141H Lot. No. (See product label)

SPECIFICATION

Product Overview	Recombinant Human BGLAP Protein (Ala21-Pro99) with a N-His tag was expressed in E. coli.
Species	Human
Source	E.coli
ProteinLength	Ala21-Pro99
Description	This gene encodes a highly abundant bone protein secreted by osteoblasts that regulates bone remodeling and energy metabolism. The encoded protein contains a Gla (gamma carboxyglutamate) domain, which functions in binding to calcium and hydroxyapatite, the mineral component of bone. Serum osteocalcin levels may be negatively correlated with metabolic syndrome. Read-through transcription exists between this gene and the neighboring upstream gene, PMF1 (polyamine-modulated factor 1), but the encoded protein only shows sequence identity with the upstream gene product.
Form	Freeze-dried powder
Molecular Mass	Predicted Molecular Mass: 12.6 kDa Accurate Molecular Mass: 13 kDa
Endotoxin	<1.0 EU per 1g (determined by the LAL method).

 Tel: 1-631-559-9269 1-516-512-3133

 Email: info@creative-biomart.com  Fax: 1-631-938-8127

 45-1 Ramsey Road, Shirley, NY 11967, USA

Purity	> 90%
Applications	Positive Control; Immunogen; SDS-PAGE; WB.
Stability	The thermal stability is described by the loss rate. The loss rate was determined by accelerated thermal degradation test, that is, incubate the protein at 37 centigrade for 48h, and no obvious degradation and precipitation were observed. The loss rate is less than 5% within the expiration date under appropriate storage condition.
Storage	Avoid repeated freeze/thaw cycles. Store at 2-8 centigrade for one month. Aliquot and store at -80 centigrade for 12 months.
Storage Buffer	PBS, pH7.4, containing 0.01% SKL, 1mM DTT, 5% Trehalose and Proclin300.
Reconstitution	Reconstitute in 10mM PBS (pH7.4) to a concentration of 0.1-1.0 mg/mL. Do not vortex.

GENE INFORMATION

Gene Name	BGLAP bone gamma-carboxyglutamate (gla) protein [Homo sapiens (human)]
Official Symbol	BGLAP
Synonyms	BGLAP; bone gamma-carboxyglutamate (gla) protein; osteocalcin; bone Gla protein; gamma-carboxyglutamic acid-containing protein; bone gamma-carboxyglutamate (gla) protein (osteocalcin); OC; BGP;
Gene ID	632
mRNA Refseq	NM_199173

 Tel: 1-631-559-9269 1-516-512-3133

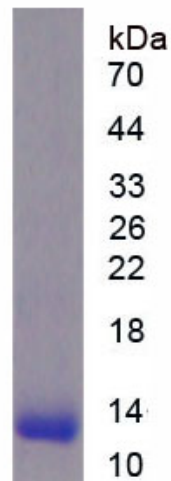
 Email: info@creative-biomart.com  Fax: 1-631-938-8127

 45-1 Ramsey Road, Shirley, NY 11967, USA

Protein Refseq NP_954642

MIM 112260

UniProt ID P02818



 Tel: 1-631-559-9269 1-516-512-3133

 Email: info@creative-biomart.com  Fax: 1-631-938-8127

 45-1 Ramsey Road, Shirley, NY 11967, USA