

Recombinant Human BGN Protein, His-tagged

Cat. No. BGN-314H **Lot. No.** (See product label)

SPECIFICATION

Product Overview	Recombinant Human BGN Protein (Val49-Tyr366) with N-His tag was expressed in E. coli.
Species	Human
Source	E.coli
ProteinLength	Val49-Tyr366
Description	This gene encodes a member of the small leucine-rich proteoglycan (SLRP) family of proteins. The encoded preproprotein is proteolytically processed to generate the mature protein, which plays a role in bone growth, muscle development and regeneration, and collagen fibril assembly in multiple tissues. This protein may also regulate inflammation and innate immunity. Additionally, the encoded protein may contribute to atherosclerosis and aortic valve stenosis in human patients. This gene and the related gene decorin are thought to be the result of a gene duplication.
Form	Freeze-dried powder
Molecular Mass	Predicted Molecular Mass: 39.7 kDa Accurate Molecular Mass: 40 kDa
Purity	> 90%
Applications	Positive Control; Immunogen; SDS-PAGE; WB.

 Tel: 1-631-559-9269 1-516-512-3133

 Email: info@creative-biomart.com  Fax: 1-631-938-8127

 45-1 Ramsey Road, Shirley, NY 11967, USA

Stability	The thermal stability is described by the loss rate. The loss rate was determined by accelerated thermal degradation test, that is, incubate the protein at 37 centigrade for 48h, and no obvious degradation and precipitation were observed. The loss rate is less than 5% within the expiration date under appropriate storage condition.
Storage	Avoid repeated freeze/thaw cycles. Store at 2-8 centigrade for one month. Aliquot and store at -80 centigrade for 12 months.
Storage Buffer	PBS, pH7.4, containing 0.01% SKL, 1 mM DTT, 5% Trehalose and Proclin300.
Reconstitution	Reconstitute in sterile water to a concentration of 0.1-1.0 mg/mL. Do not vortex.

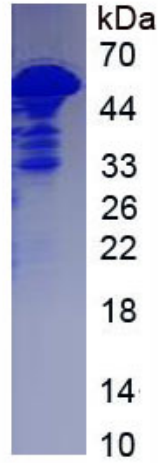
GENE INFORMATION

Gene Name	BGN biglycan [<i>Homo sapiens</i> (human)]
Official Symbol	BGN
Synonyms	BGN; biglycan; biglycan proteoglycan; DSPG1; SLRR1A; bone/cartilage proteoglycan I; bone/cartilage proteoglycan-I; small leucine-rich protein 1A; dermatan sulphate proteoglycan I; PGI; PG-S1
Gene ID	633
mRNA Refseq	NM_001711
Protein Refseq	NP_001702
MIM	301870
UniProt ID	P21810

 Tel: 1-631-559-9269 1-516-512-3133

 Email: info@creative-biomart.com  Fax: 1-631-938-8127

 45-1 Ramsey Road, Shirley, NY 11967, USA



Tel: 1-631-559-9269 1-516-512-3133

Email: info@creative-biomart.com Fax: 1-631-938-8127

45-1 Ramsey Road, Shirley, NY 11967, USA