

Recombinant Human BHLHA15 Protein, Myc/DDK-tagged, C13 and N15-labeled

Cat. No. BHLHA15-927H **Lot. No.** (See product label)

SPECIFICATION

Product Overview	BHLHA15 MS Standard C13 and N15-labeled recombinant protein (NP_803238) with a C-terminal MYC/DDK tag, was expressed in HEK293 cells.
Species	Human
Source	HEK293
Description	BHLHA15 (Basic Helix-Loop-Helix Family Member A15) is a Protein Coding gene. Diseases associated with BHLHA15 include Maturity-Onset Diabetes Of The Young and Gastric Diffuse Adenocarcinoma. Among its related pathways are Regulation of beta-cell development. Gene Ontology (GO) annotations related to this gene include protein homodimerization activity and RNA polymerase II regulatory region sequence-specific DNA binding. An important paralog of this gene is ATOH1.
Molecular Mass	20.6 kDa
AA Sequence	MKTKNRPPRRRAPVQDTEATPGEGTPDGSLPNPGPEPAKGLRSRPARAAARAPGE GRRRRPGPSGPGGRRDSSIQRRLNESNERERQRMHKLNNAFQALREVIPHVRADKK LSKIETLTLAKNYIKSLTATILTMSSSRLPGLEGPGPKLYQHYQQQQVAGGALGATE AQPQGHLLQRYSTQIHSFREGTTRTRPLEQKLISEEDLAANDILDYKDDDDKV
Purity	> 80% as determined by SDS-PAGE and Coomassie blue staining
Stability	Stable for 3 months from receipt of products under proper storage and handling

 Tel: 1-631-559-9269 1-516-512-3133

 Email: info@creative-biomart.com  Fax: 1-631-938-8127

 45-1 Ramsey Road, Shirley, NY 11967, USA

conditions.

Storage Store at -80 centigrade. Avoid repeated freeze-thaw cycles.

Concentration 50 µg/mL as determined by BCA

Storage Buffer 100 mM glycine, 25 mM Tris-HCl, pH 7.3.

GENE INFORMATION

Gene Name [BHLHA15 basic helix-loop-helix family member a15 \[Homo sapiens \(human\) \]](#)

Official Symbol [BHLHA15](#)

Synonyms BHLHA15; basic helix-loop-helix family, member a15; basic helix loop helix domain containing, class B, 8, BHLHB8; class A basic helix-loop-helix protein 15; bHLHa15; MIST1; MIST-1; class II bHLH protein MIST1; class B basic helix-loop-helix protein 8; muscle, intestine and stomach expression 1; basic helix-loop-helix domain containing, class B, 8; BHLHB8;

Gene ID [168620](#)

mRNA Refseq [NM_177455](#)

Protein Refseq [NP_803238](#)

MIM [608606](#)

UniProt ID [Q7RTS1](#)

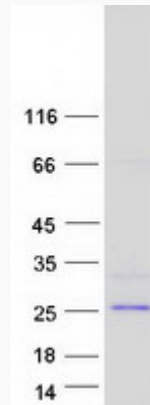
 Tel: 1-631-559-9269 1-516-512-3133

 Email: info@creative-biomart.com  Fax: 1-631-938-8127

 45-1 Ramsey Road, Shirley, NY 11967, USA



SDS-PAGE



Tel: 1-631-559-9269 1-516-512-3133

Email: info@creative-biomart.com Fax: 1-631-938-8127

45-1 Ramsey Road, Shirley, NY 11967, USA