

## Recombinant Human BHLHE40 Protein, GST-tagged

Cat. No. BHLHE40-207H Lot. No. (See product label)

### SPECIFICATION

<b>Product Overview</b>	Human BHLHB2 partial ORF ( NP_003661, 130 a.a. - 229 a.a.) recombinant protein with GST-tag at N-terminal.
<b>Species</b>	Human
<b>Source</b>	Wheat Germ
<b>Description</b>	This gene encodes a basic helix-loop-helix protein expressed in various tissues. Expression in the chondrocytes is responsive to the addition of Bt2cAMP. The encoded protein is believed to be involved in the control of cell differentiation.
<b>Form</b>	50 mM Tris-HCl, 10 mM reduced Glutathione, pH=8.0 in the elution buffer.
<b>Molecular Mass</b>	36.74 kDa
<b>AA Sequence</b>	LSGRNVETGQEMFCSGFQTCAREVLQYLAKHENTRDLKSSQLVTHLHRVVSELLQG GTSRKPSDPAPKVMDFKEKPSPPAKGSEGPGKNCVPVIQRTFAH
<b>Notes</b>	Best use within three months from the date of receipt of this protein.
<b>Storage</b>	Store at -80 centigrade. Aliquot to avoid repeated freezing and thawing.
<b>Storage Buffer</b>	50 mM Tris-HCl, 10 mM reduced Glutathione, pH=8.0 in the elution buffer.

### GENE INFORMATION

 Tel: 1-631-559-9269 1-516-512-3133

 Email: [info@creative-biomart.com](mailto:info@creative-biomart.com)  Fax: 1-631-938-8127

 45-1 Ramsey Road, Shirley, NY 11967, USA

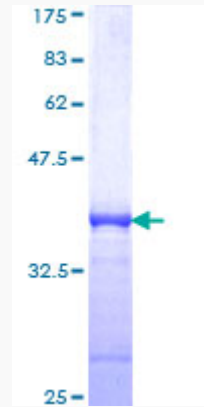


<b>Gene Name</b>	BHLHE40 basic helix-loop-helix family, member e40 [ Homo sapiens ]
<b>Official Symbol</b>	BHLHE40
<b>Synonyms</b>	BHLHE40; basic helix-loop-helix family, member e40; basic helix loop helix domain containing, class B, 2 , BHLHB2, STRA13; class E basic helix-loop-helix protein 40; differentiated embryo chondrocyte expressed gene 1; bHLHe40; DEC1; differentially expressed in chondrocytes 1; class B basic helix-loop-helix protein 2; stimulated by retinoic acid gene 13 protein; enhancer-of-split and hairy-related protein 2; differentially expressed in chondrocytes protein 1; basic helix-loop-helix domain containing, class B, 2; HLHB2; BHLHB2; STRA13; Stra14; SHARP-2; FLJ99214;
<b>Gene ID</b>	8553
<b>mRNA Refseq</b>	NM_003670
<b>Protein Refseq</b>	NP_003661
<b>MIM</b>	604256
<b>UniProt ID</b>	O14503

Tel: 1-631-559-9269 1-516-512-3133

Email: [info@creative-biomart.com](mailto:info@creative-biomart.com) Fax: 1-631-938-8127

45-1 Ramsey Road, Shirley, NY 11967, USA



 Tel: 1-631-559-9269 1-516-512-3133

 Email: [info@creative-biomart.com](mailto:info@creative-biomart.com)  Fax: 1-631-938-8127

 45-1 Ramsey Road, Shirley, NY 11967, USA