

## Recombinant Human BHLHE41 Protein, GST-tagged

Cat. No. BHLHE41-208H Lot. No. (See product label)

### SPECIFICATION

<b>Product Overview</b>	Human BHLHB3 partial ORF ( NP_110389, 203 a.a. - 282 a.a.) recombinant protein with GST-tag at N-terminal.
<b>Species</b>	Human
<b>Source</b>	Wheat Germ
<b>Form</b>	50 mM Tris-HCl, 10 mM reduced Glutathione, pH=8.0 in the elution buffer.
<b>Molecular Mass</b>	34.54 kDa
<b>AA Sequence</b>	CLERAGQKLEPLAYCVPVIQRTQPSAELAAENDTDTDSGYGGAEARPDREKKGKA GASRVTIKQEPPGEDSPAPKRMKL
<b>Notes</b>	Best use within three months from the date of receipt of this protein.
<b>Storage</b>	Store at -80 centigrade. Aliquot to avoid repeated freezing and thawing.
<b>Storage Buffer</b>	50 mM Tris-HCl, 10 mM reduced Glutathione, pH=8.0 in the elution buffer.

### GENE INFORMATION

<b>Gene Name</b>	BHLHE41 basic helix-loop-helix family, member e41 [ Homo sapiens ]
<b>Official Symbol</b>	BHLHE41

 Tel: 1-631-559-9269 1-516-512-3133

 Email: [info@creative-biomart.com](mailto:info@creative-biomart.com)  Fax: 1-631-938-8127

 45-1 Ramsey Road, Shirley, NY 11967, USA

**Synonyms**

BHLHE41; basic helix-loop-helix family, member e41; basic helix loop helix domain containing, class B, 3 , BHLHB3; class E basic helix-loop-helix protein 41; bHLHe41; DEC2; differentially expressed in chondrocytes 2; Enhancer of split and hairy related protein 1; SHARP 1; SHARP1; enhancer-of-split and hairy-related protein 1; differentially expressed in chondrocytes protein 2; basic helix-loop-helix domain containing, class B, 3; hDEC2; BHLHB3;

**Gene ID**

79365

**mRNA Refseq**

NM\_030762

**Protein Refseq**

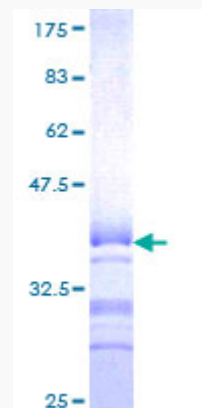
NP\_110389


**MIM**

606200

**UniProt ID**

Q9C0J9



 Tel: 1-631-559-9269 1-516-512-3133

 Email: [info@creative-biomart.com](mailto:info@creative-biomart.com)  Fax: 1-631-938-8127

 45-1 Ramsey Road, Shirley, NY 11967, USA